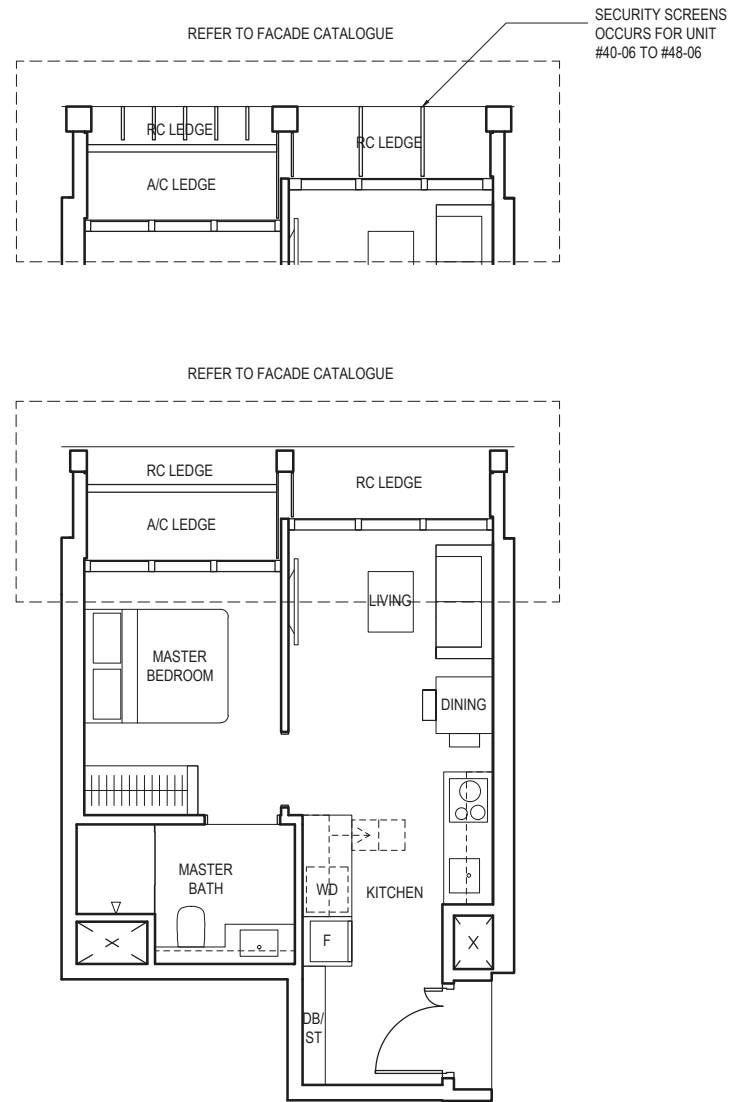


# 1-BEDROOM

## TYPE A1

38 sq m / 409 sq ft

BLK 1  
 #04-06 to #22-06  
 #25-06 to #44-06  
 #46-06 to #47-06



**LEGEND (WHERE APPLICABLE)**  
 DB Distribution Board    WD Washer cum Dryer    W/D Washer and Dryer    F Fridge    DW Dishwasher    WIW Walk-In Wardrobe  
 WC Water Closet    ST Storage    HS Household Shelter    TB Tallboy    CH Wine Chiller

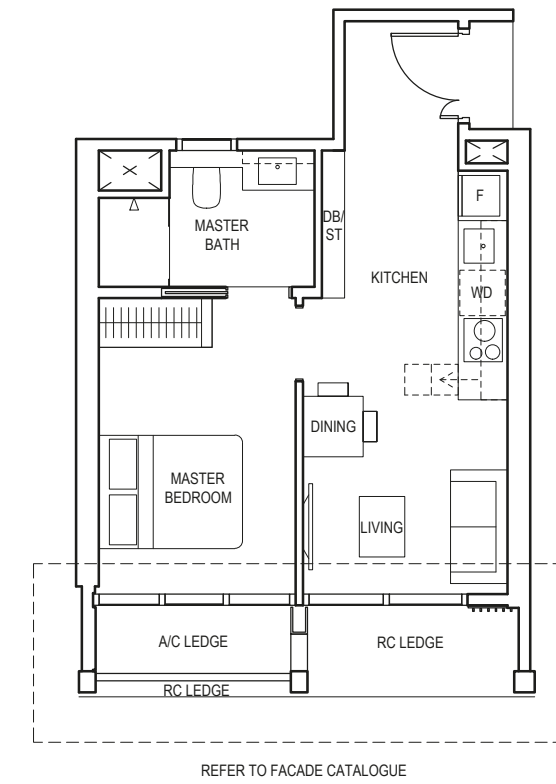
Area includes air-con (a/c) ledge, balcony and void where applicable. Please refer to the keyplan for orientation. The plans are subjected to change as may be approved by relevant authorities. All floor plans are approximate measurements only and are subjected to government re-survey. The balcony shall not be enclosed unless with the approved balcony screen. For an illustration of the approved balcony screen, please refer to the diagram annexed hereto as "Annexure A".

# 1-BEDROOM

## TYPE A2

41 sq m / 441 sq ft

BLK 5  
 #08-27 to #23-27



**LEGEND (WHERE APPLICABLE)**  
 DB Distribution Board    WD Washer cum Dryer    W/D Washer and Dryer    F Fridge    DW Dishwasher    WIW Walk-In Wardrobe  
 WC Water Closet    ST Storage    HS Household Shelter    TB Tallboy    CH Wine Chiller

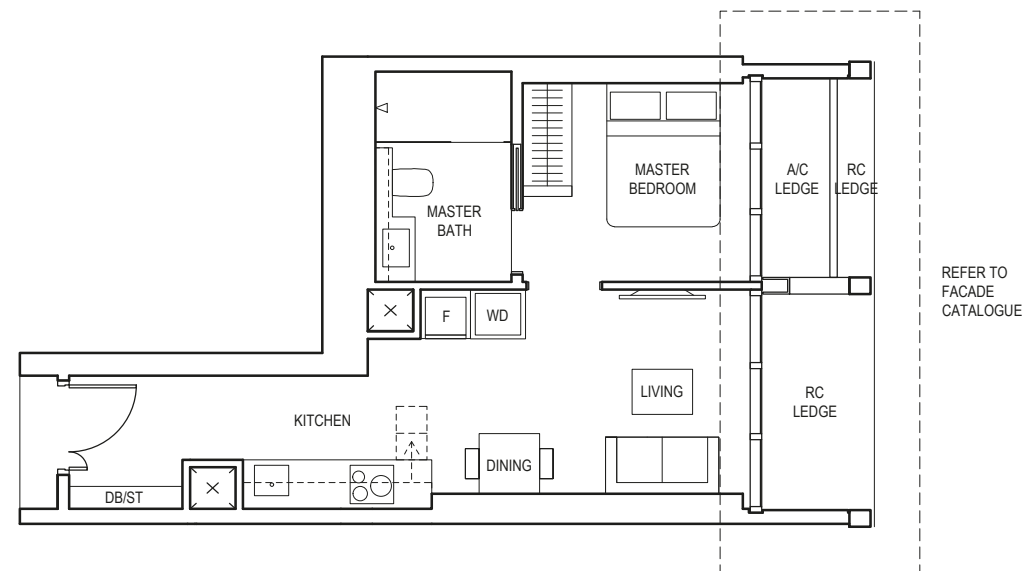
Area includes air-con (a/c) ledge, balcony and void where applicable. Please refer to the keyplan for orientation. The plans are subjected to change as may be approved by relevant authorities. All floor plans are approximate measurements only and are subjected to government re-survey. The balcony shall not be enclosed unless with the approved balcony screen. For an illustration of the approved balcony screen, please refer to the diagram annexed hereto as "Annexure A".

# 1-BEDROOM

## TYPE A3

43 sq m / 463 sq ft

BLK 1  
#04-09 to #23-09  
#25-09 to #44-09



**LEGEND (WHERE APPLICABLE)**  
**DB** Distribution Board    **WD** Washer cum Dryer    **WD** Washer and Dryer    **F** Fridge    **DW** Dishwasher    **WIW** Walk-In Wardrobe  
**WC** Water Closet    **ST** Storage    **HS** Household Shelter    **TB** Tallboy    **CH** Wine Chiller

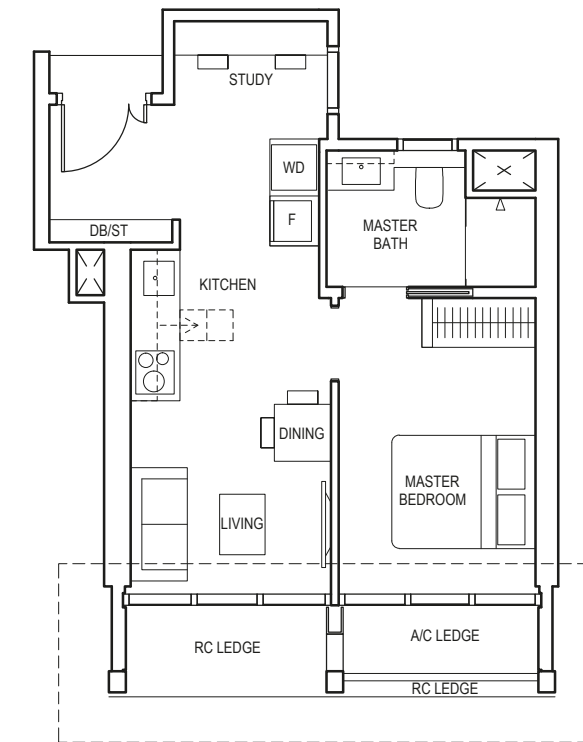
Area includes air-con (a/c) ledge, balcony and void where applicable. Please refer to the keyplan for orientation. The plans are subjected to change as may be approved by relevant authorities. All floor plans are approximate measurements only and are subjected to government re-survey. The balcony shall not be enclosed unless with the approved balcony screen. For an illustration of the approved balcony screen, please refer to the diagram annexed hereto as "Annexure A".

# 1-BEDROOM + STUDY

## TYPE AS1

44 sq m / 474 sq ft

BLK 5  
#04-15 to #23-15



**LEGEND (WHERE APPLICABLE)**  
**DB** Distribution Board    **WD** Washer cum Dryer    **WD** Washer and Dryer    **F** Fridge    **DW** Dishwasher    **WIW** Walk-In Wardrobe  
**WC** Water Closet    **ST** Storage    **HS** Household Shelter    **TB** Tallboy    **CH** Wine Chiller

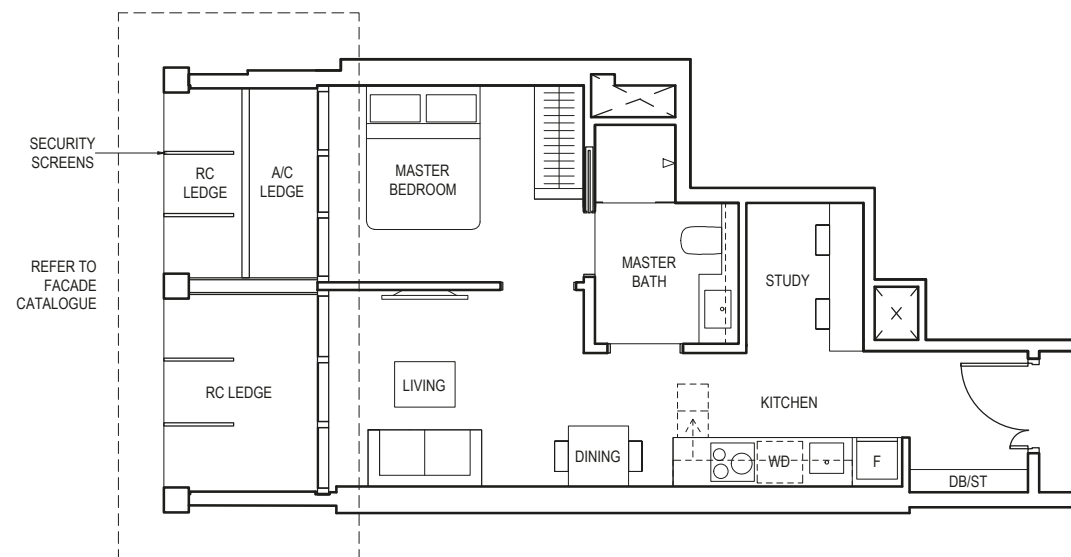
Area includes air-con (a/c) ledge, balcony and void where applicable. Please refer to the keyplan for orientation. The plans are subjected to change as may be approved by relevant authorities. All floor plans are approximate measurements only and are subjected to government re-survey. The balcony shall not be enclosed unless with the approved balcony screen. For an illustration of the approved balcony screen, please refer to the diagram annexed hereto as "Annexure A".

# 1-BEDROOM + STUDY

## TYPE AS2

45 sq m / 484 sq ft

BLK 1  
#40-04 to #44-04  
#46-04 to #47-04



**LEGEND (WHERE APPLICABLE)**  
**DB** Distribution Board    **WD** Washer cum Dryer    **WD** Washer and Dryer    **F** Fridge    **DW** Dishwasher    **WIW** Walk-In Wardrobe  
**WC** Water Closet    **ST** Storage    **HS** Household Shelter    **TB** Tallboy    **CH** Wine Chiller

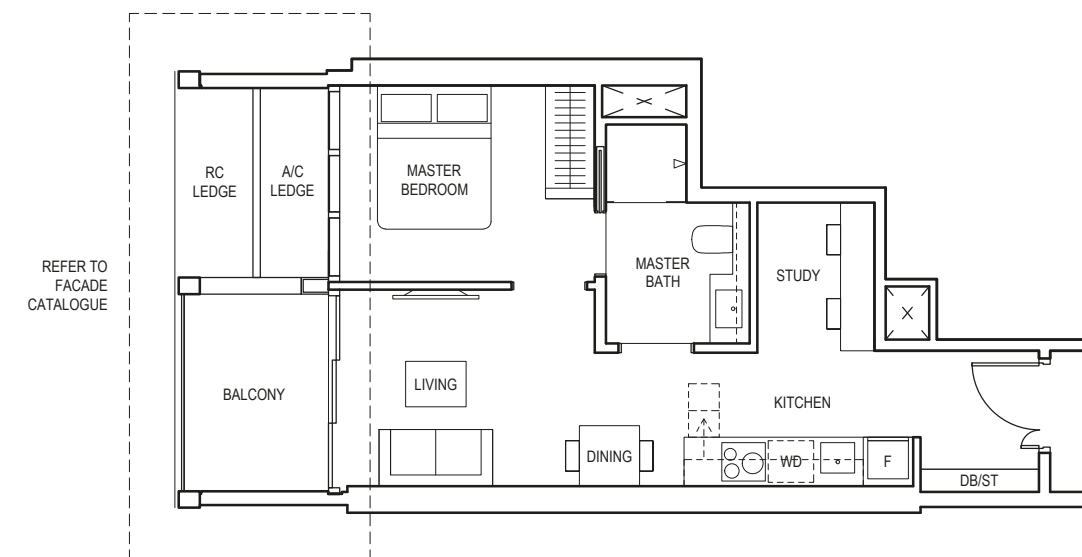
Area includes air-con (a/c) ledge, balcony and void where applicable. Please refer to the keyplan for orientation. The plans are subjected to change as may be approved by relevant authorities. All floor plans are approximate measurements only and are subjected to government re-survey. The balcony shall not be enclosed unless with the approved balcony screen. For an illustration of the approved balcony screen, please refer to the diagram annexed hereto as "Annexure A".

# 1-BEDROOM + STUDY

## TYPE AS2a

50 sq m / 538 sq ft

BLK 1  
#04-04 to #22-04  
#25-04 to #39-04



**LEGEND (WHERE APPLICABLE)**  
**DB** Distribution Board    **WD** Washer cum Dryer    **WD** Washer and Dryer    **F** Fridge    **DW** Dishwasher    **WIW** Walk-In Wardrobe  
**WC** Water Closet    **ST** Storage    **HS** Household Shelter    **TB** Tallboy    **CH** Wine Chiller

Area includes air-con (a/c) ledge, balcony and void where applicable. Please refer to the keyplan for orientation. The plans are subjected to change as may be approved by relevant authorities. All floor plans are approximate measurements only and are subjected to government re-survey. The balcony shall not be enclosed unless with the approved balcony screen. For an illustration of the approved balcony screen, please refer to the diagram annexed hereto as "Annexure A".

## TYPE AS2a(p)

50 sq m / 538 sq ft

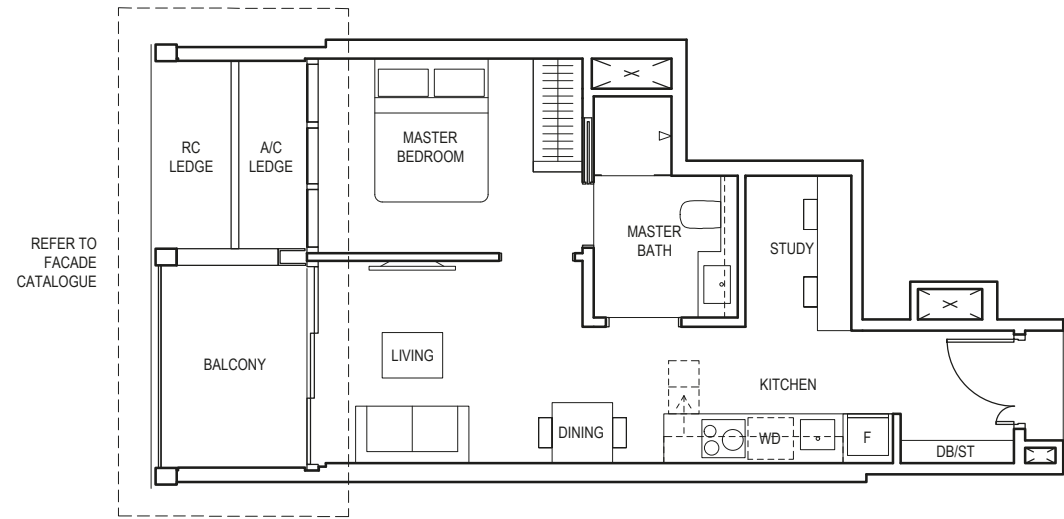
BLK 1  
#23-04

# 1-BEDROOM + STUDY

## TYPE AS2b

50 sq m / 538 sq ft

BLK 5  
#04-19 to #23-19



**LEGEND (WHERE APPLICABLE)**  
**DB** Distribution Board **WD** Washer cum Dryer **WD** Washer and Dryer **F** Fridge **DW** Dishwasher **WIW** Walk-In Wardrobe  
**WC** Water Closet **ST** Storage **HS** Household Shelter **TB** Tallboy **CH** Wine Chiller

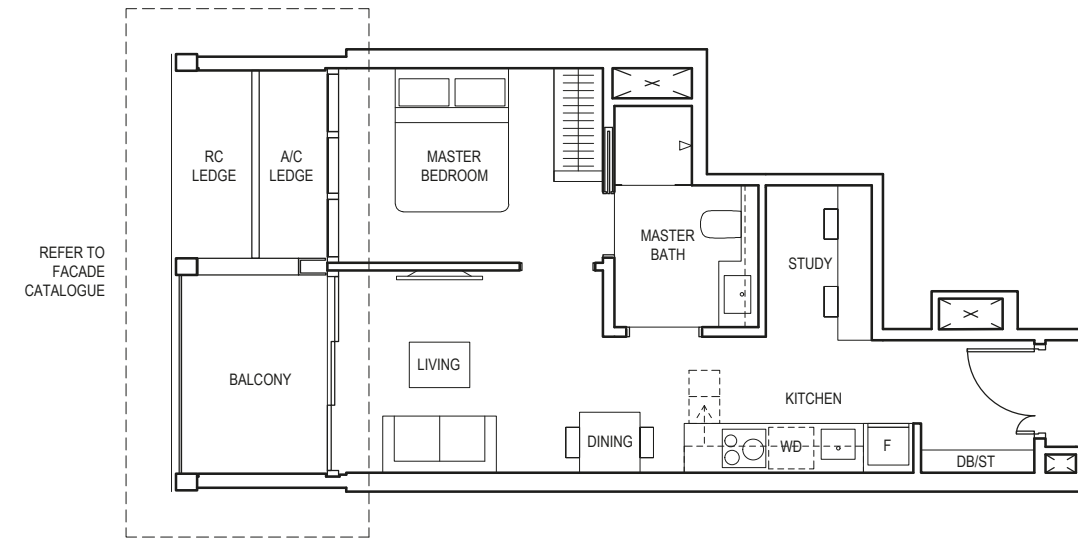
Area includes air-con (a/c) ledge, balcony and void where applicable. Please refer to the keyplan for orientation. The plans are subjected to change as may be approved by relevant authorities. All floor plans are approximate measurements only and are subjected to government re-survey. The balcony shall not be enclosed unless with the approved balcony screen. For an illustration of the approved balcony screen, please refer to the diagram annexed hereto as "Annexure A".

# 1-BEDROOM + STUDY

## TYPE AS2c

50 sq m / 538 sq ft

BLK 5  
#04-18 to #23-18



**LEGEND (WHERE APPLICABLE)**  
**DB** Distribution Board **WD** Washer cum Dryer **WD** Washer and Dryer **F** Fridge **DW** Dishwasher **WIW** Walk-In Wardrobe  
**WC** Water Closet **ST** Storage **HS** Household Shelter **TB** Tallboy **CH** Wine Chiller

Area includes air-con (a/c) ledge, balcony and void where applicable. Please refer to the keyplan for orientation. The plans are subjected to change as may be approved by relevant authorities. All floor plans are approximate measurements only and are subjected to government re-survey. The balcony shall not be enclosed unless with the approved balcony screen. For an illustration of the approved balcony screen, please refer to the diagram annexed hereto as "Annexure A".

# 1-BEDROOM + STUDY

## TYPE AS3

45 sq m / 484 sq ft

BLK 1  
#40-03 to #44-03  
#46-03 to #47-03

## TYPE AS3(p)

45 sq m / 484 sq ft

BLK 1  
#48-03

# 1-BEDROOM + STUDY

## TYPE AS3a

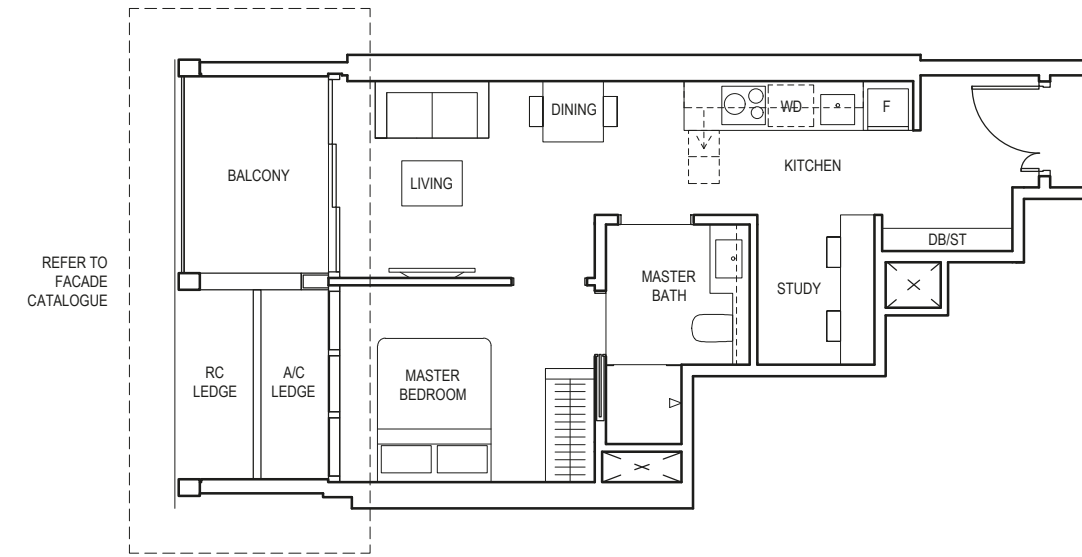
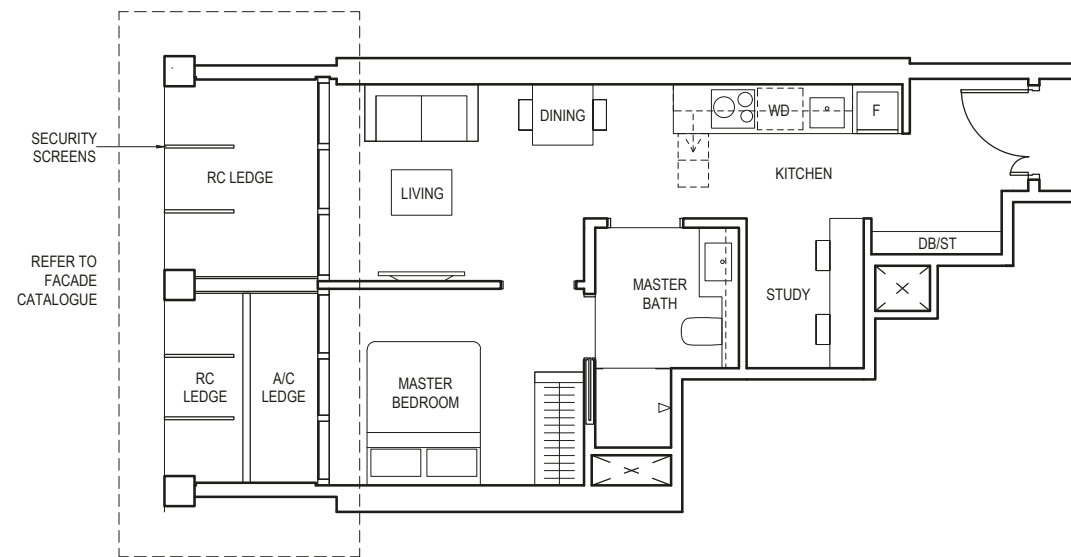
51 sq m / 549 sq ft

BLK 1  
#04-03 to #22-03  
#25-03 to #39-03

## TYPE AS3a(p)

51 sq m / 549 sq ft

BLK 1  
#23-03



**LEGEND (WHERE APPLICABLE)**  
**DB** Distribution Board    **WD** Washer cum Dryer    **W/D** Washer and Dryer    **F** Fridge    **DW** Dishwasher    **WIW** Walk-In Wardrobe  
**WC** Water Closet    **ST** Storage    **HS** Household Shelter    **TB** Tallboy    **CH** Wine Chiller

Area includes air-con (a/c) ledge, balcony and void where applicable. Please refer to the keyplan for orientation. The plans are subjected to change as may be approved by relevant authorities. All floor plans are approximate measurements only and are subjected to government re-survey. The balcony shall not be enclosed unless with the approved balcony screen. For an illustration of the approved balcony screen, please refer to the diagram annexed hereto as "Annexure A".



**LEGEND (WHERE APPLICABLE)**  
**DB** Distribution Board    **WD** Washer cum Dryer    **W/D** Washer and Dryer    **F** Fridge    **DW** Dishwasher    **WIW** Walk-In Wardrobe  
**WC** Water Closet    **ST** Storage    **HS** Household Shelter    **TB** Tallboy    **CH** Wine Chiller

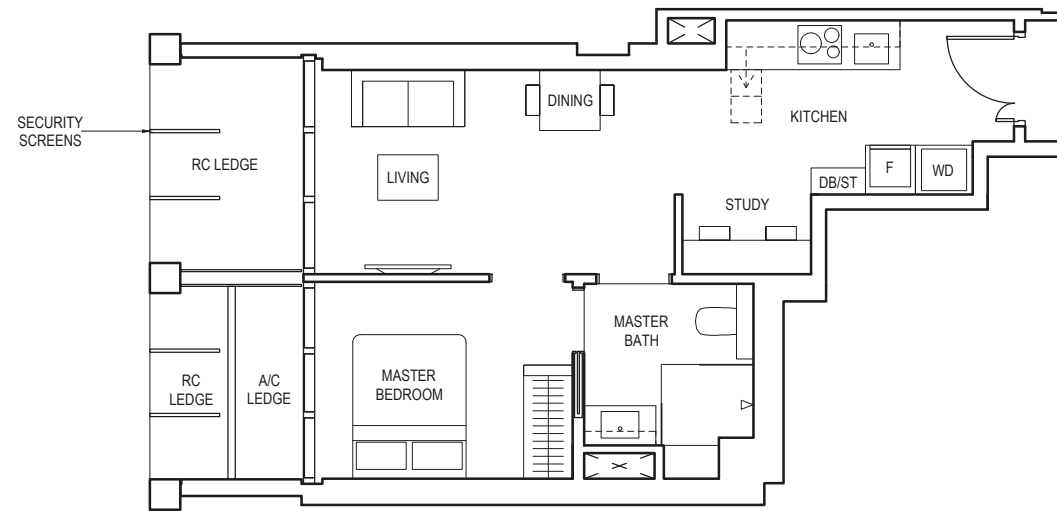
Area includes air-con (a/c) ledge, balcony and void where applicable. Please refer to the keyplan for orientation. The plans are subjected to change as may be approved by relevant authorities. All floor plans are approximate measurements only and are subjected to government re-survey. The balcony shall not be enclosed unless with the approved balcony screen. For an illustration of the approved balcony screen, please refer to the diagram annexed hereto as "Annexure A".

# 1-BEDROOM + STUDY

## TYPE AS4

47 sq m / 506 sq ft

BLK 1  
#46-02 to #47-02



**LEGEND (WHERE APPLICABLE)**  
**DB** Distribution Board    **WD** Washer cum Dryer    **W/D** Washer and Dryer    **F** Fridge    **DW** Dishwasher    **WIW** Walk-In Wardrobe  
**WC** Water Closet    **ST** Storage    **HS** Household Shelter    **TB** Tallboy    **CH** Wine Chiller

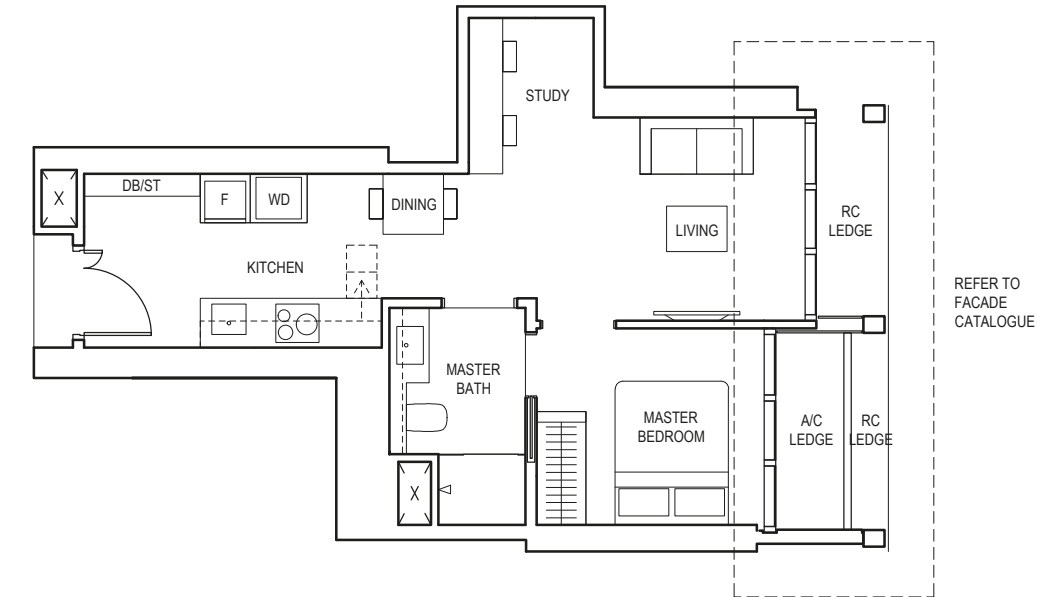
Area includes air-con (a/c) ledge, balcony and void where applicable. Please refer to the keyplan for orientation. The plans are subjected to change as may be approved by relevant authorities. All floor plans are approximate measurements only and are subjected to government re-survey. The balcony shall not be enclosed unless with the approved balcony screen. For an illustration of the approved balcony screen, please refer to the diagram annexed hereto as "Annexure A".

# 1-BEDROOM + STUDY

## TYPE AS5

47 sq m / 506 sq ft

BLK 1  
#04-08 to #23-08



**LEGEND (WHERE APPLICABLE)**  
**DB** Distribution Board    **WD** Washer cum Dryer    **W/D** Washer and Dryer    **F** Fridge    **DW** Dishwasher    **WIW** Walk-In Wardrobe  
**WC** Water Closet    **ST** Storage    **HS** Household Shelter    **TB** Tallboy    **CH** Wine Chiller

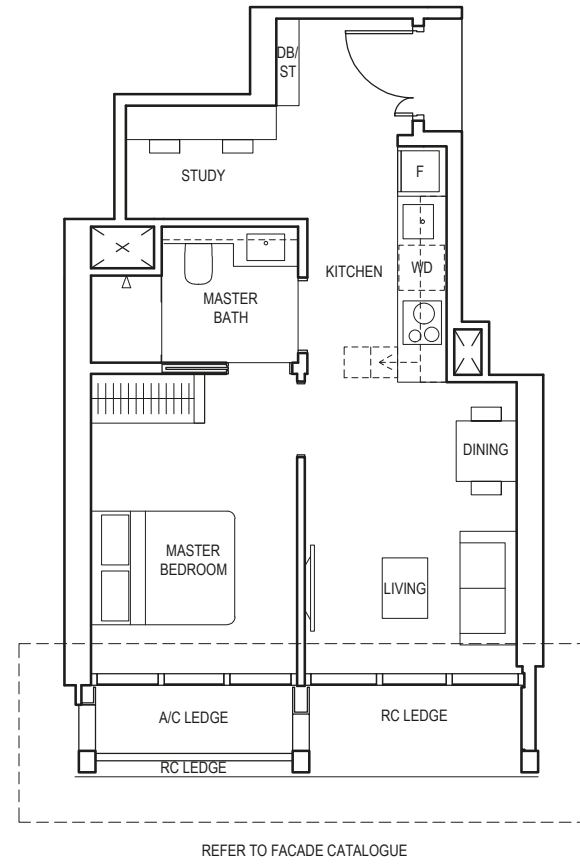
Area includes air-con (a/c) ledge, balcony and void where applicable. Please refer to the keyplan for orientation. The plans are subjected to change as may be approved by relevant authorities. All floor plans are approximate measurements only and are subjected to government re-survey. The balcony shall not be enclosed unless with the approved balcony screen. For an illustration of the approved balcony screen, please refer to the diagram annexed hereto as "Annexure A".

# 1-BEDROOM + STUDY

## TYPE AS6

47 sq m / 506 sq ft

BLK 5  
#04-16 to #23-16



**LEGEND (WHERE APPLICABLE)**  
**DB** Distribution Board    **WD** Washer cum Dryer    **W/D** Washer and Dryer    **F** Fridge    **DW** Dishwasher    **WIW** Walk-In Wardrobe  
**WC** Water Closet    **ST** Storage    **HS** Household Shelter    **TB** Tallboy    **CH** Wine Chiller

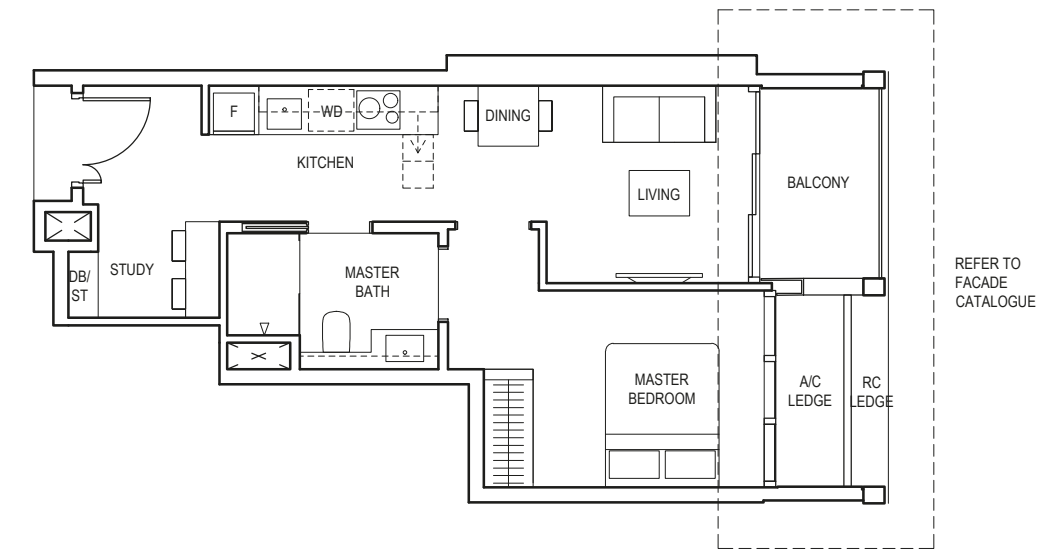
Area includes air-con (a/c) ledge, balcony and void where applicable. Please refer to the keyplan for orientation. The plans are subjected to change as may be approved by relevant authorities. All floor plans are approximate measurements only and are subjected to government re-survey. The balcony shall not be enclosed unless with the approved balcony screen. For an illustration of the approved balcony screen, please refer to the diagram annexed hereto as "Annexure A".

# 1-BEDROOM + STUDY

## TYPE AS7

50 sq m / 538 sq ft

BLK 1  
#04-10 to #23-10



**LEGEND (WHERE APPLICABLE)**  
**DB** Distribution Board    **WD** Washer cum Dryer    **W/D** Washer and Dryer    **F** Fridge    **DW** Dishwasher    **WIW** Walk-In Wardrobe  
**WC** Water Closet    **ST** Storage    **HS** Household Shelter    **TB** Tallboy    **CH** Wine Chiller

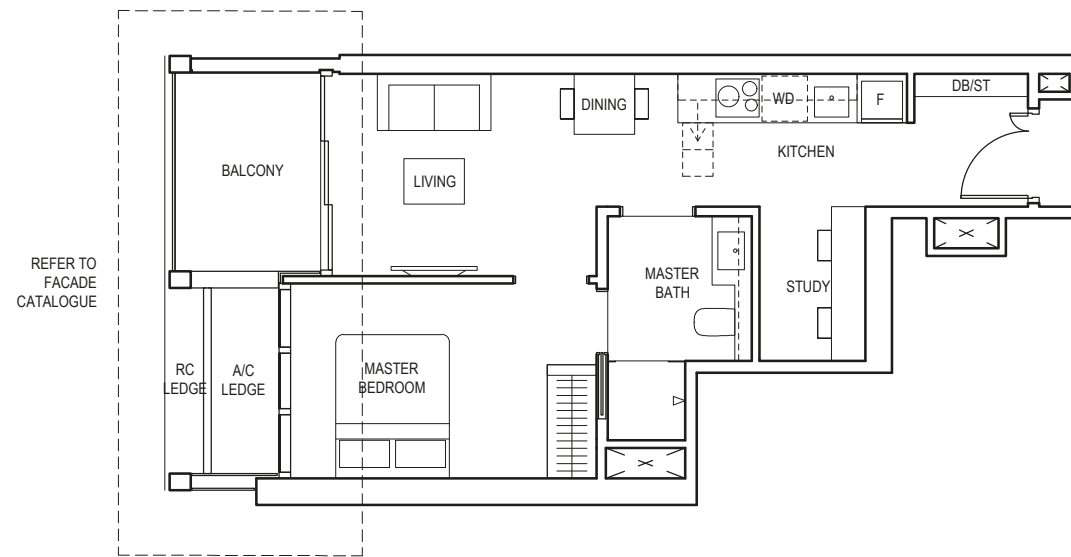
Area includes air-con (a/c) ledge, balcony and void where applicable. Please refer to the keyplan for orientation. The plans are subjected to change as may be approved by relevant authorities. All floor plans are approximate measurements only and are subjected to government re-survey. The balcony shall not be enclosed unless with the approved balcony screen. For an illustration of the approved balcony screen, please refer to the diagram annexed hereto as "Annexure A".

# 1-BEDROOM + STUDY

## TYPE AS8

52 sq m / 560 sq ft

BLK 5  
#04-17 to #23-17



**LEGEND (WHERE APPLICABLE)**  
 DB Distribution Board    WD Washer cum Dryer    W/D Washer and Dryer    F Fridge    DW Dishwasher    WIW Walk-In Wardrobe  
 WC Water Closet    ST Storage    HS Household Shelter    TB Tallboy    CH Wine Chiller

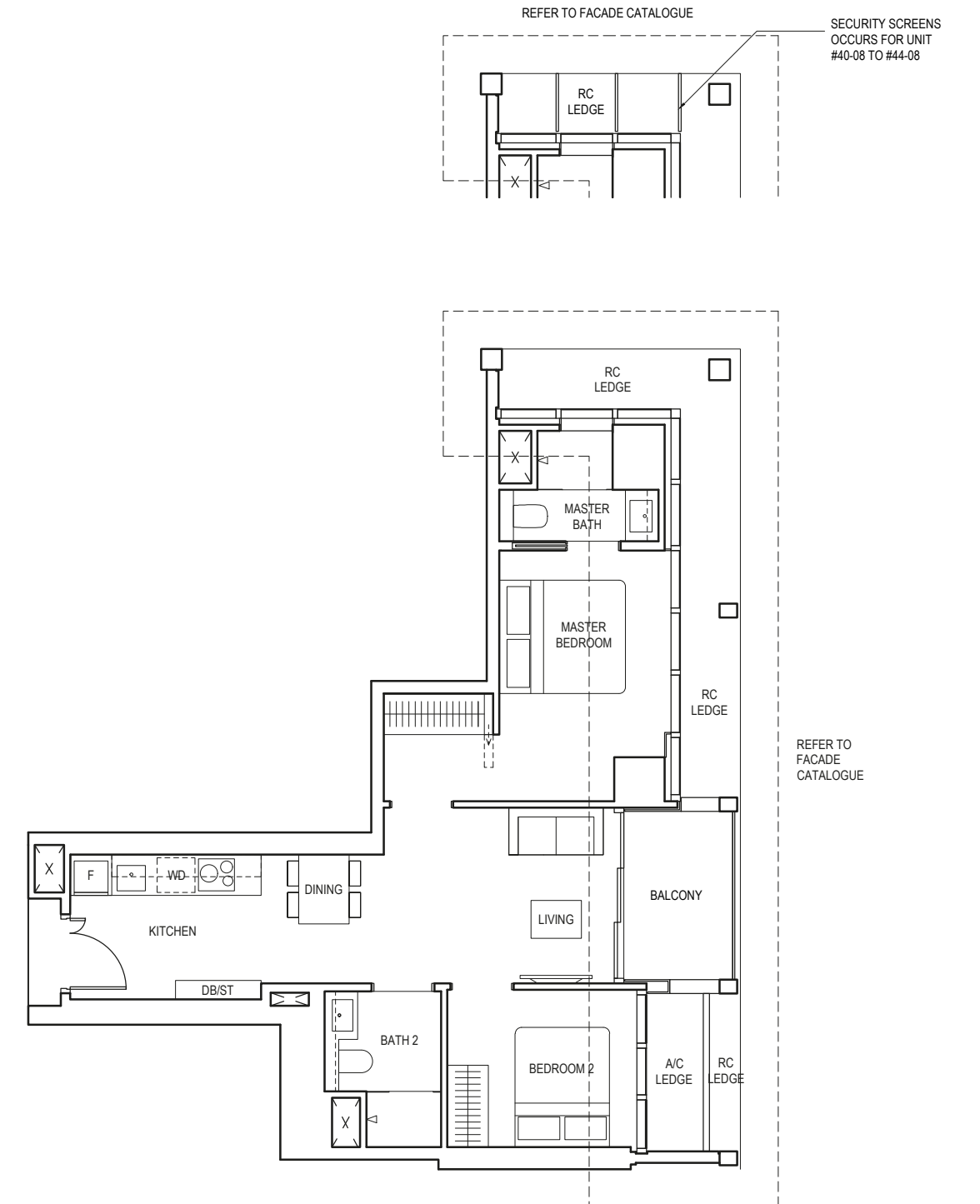
Area includes air-con (a/c) ledge, balcony and void where applicable. Please refer to the keyplan for orientation. The plans are subjected to change as may be approved by relevant authorities. All floor plans are approximate measurements only and are subjected to government re-survey. The balcony shall not be enclosed unless with the approved balcony screen. For an illustration of the approved balcony screen, please refer to the diagram annexed hereto as "Annexure A".

# 2-BEDROOM

## TYPE B1

68 sq m / 732 sq ft

BLK 1  
#25-08 to #44-08



**LEGEND (WHERE APPLICABLE)**  
 DB Distribution Board    WD Washer cum Dryer    W/D Washer and Dryer    F Fridge    DW Dishwasher    WIW Walk-In Wardrobe  
 WC Water Closet    ST Storage    HS Household Shelter    TB Tallboy    CH Wine Chiller

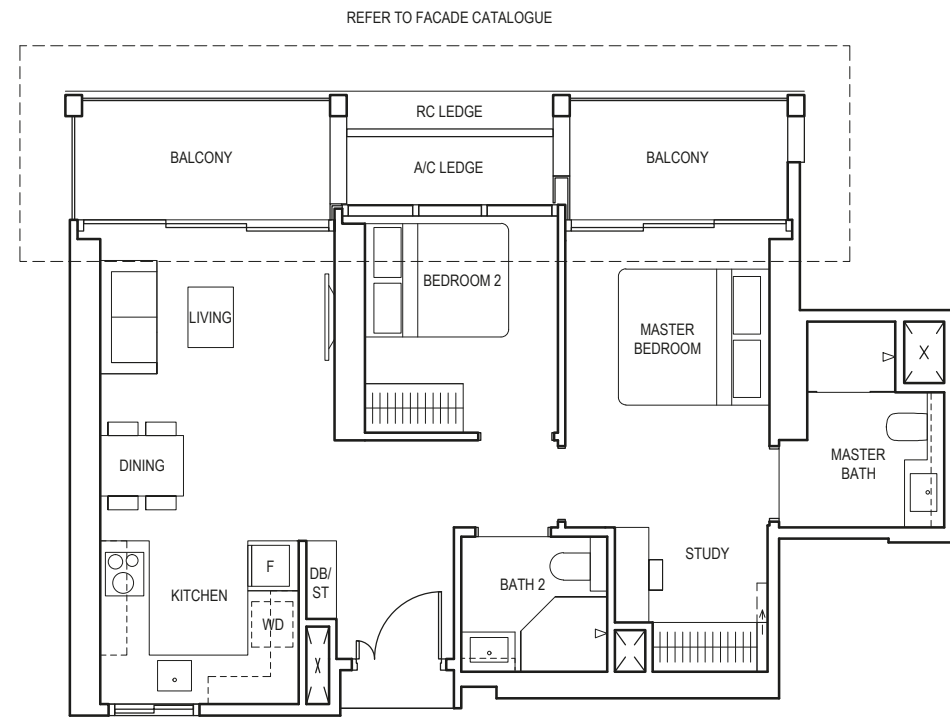
Area includes air-con (a/c) ledge, balcony and void where applicable. Please refer to the keyplan for orientation. The plans are subjected to change as may be approved by relevant authorities. All floor plans are approximate measurements only and are subjected to government re-survey. The balcony shall not be enclosed unless with the approved balcony screen. For an illustration of the approved balcony screen, please refer to the diagram annexed hereto as "Annexure A".

# 2-BEDROOM + ENSUITE STUDY

## TYPE B1(S)

77 sq m / 829 sq ft

BLK 1  
#04-07 to #23-07



**LEGEND (WHERE APPLICABLE)**  
 DB Distribution Board    WD Washer cum Dryer    W/D Washer and Dryer    F Fridge    DW Dishwasher    WIW Walk-In Wardrobe  
 WC Water Closet    ST Storage    HS Household Shelter    TB Tallboy    CH Wine Chiller

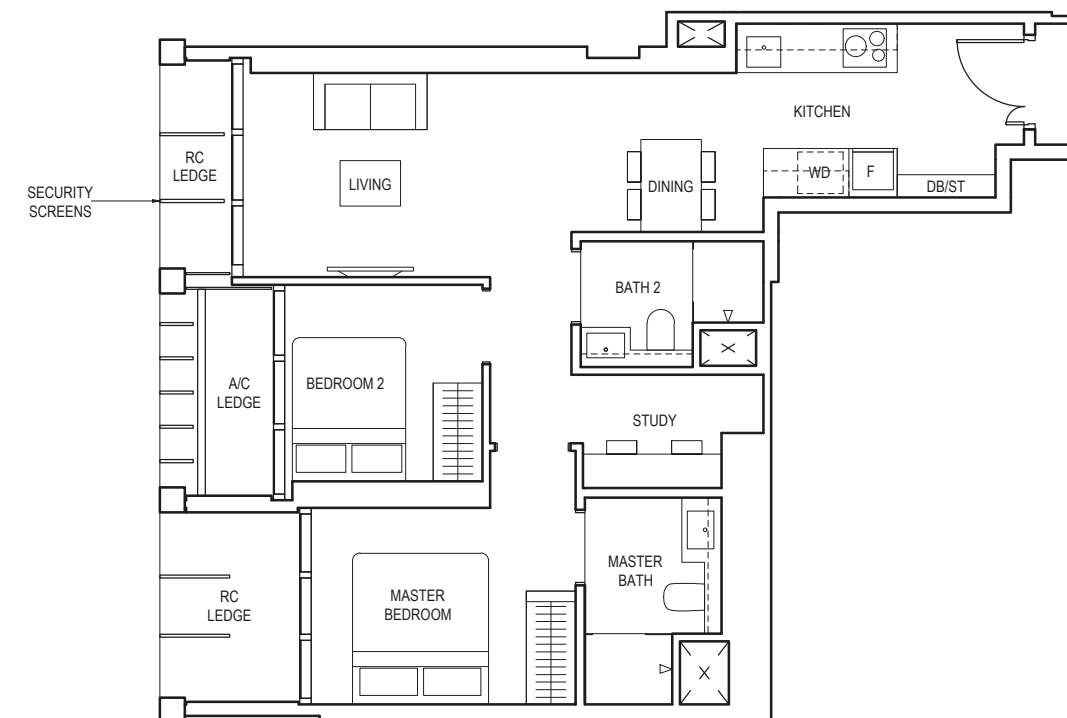
Area includes air-con (a/c) ledge, balcony and void where applicable. Please refer to the keyplan for orientation. The plans are subjected to change as may be approved by relevant authorities. All floor plans are approximate measurements only and are subjected to government re-survey. The balcony shall not be enclosed unless with the approved balcony screen. For an illustration of the approved balcony screen, please refer to the diagram annexed hereto as "Annexure A".

# 2-BEDROOM + STUDY

## TYPE BS1

68 sq m / 732 sq ft

BLK 1  
#40-02 to #44-02



**LEGEND (WHERE APPLICABLE)**  
 DB Distribution Board    WD Washer cum Dryer    W/D Washer and Dryer    F Fridge    DW Dishwasher    WIW Walk-In Wardrobe  
 WC Water Closet    ST Storage    HS Household Shelter    TB Tallboy    CH Wine Chiller

Area includes air-con (a/c) ledge, balcony and void where applicable. Please refer to the keyplan for orientation. The plans are subjected to change as may be approved by relevant authorities. All floor plans are approximate measurements only and are subjected to government re-survey. The balcony shall not be enclosed unless with the approved balcony screen. For an illustration of the approved balcony screen, please refer to the diagram annexed hereto as "Annexure A".

# 2-BEDROOM + STUDY

## TYPE BS1a

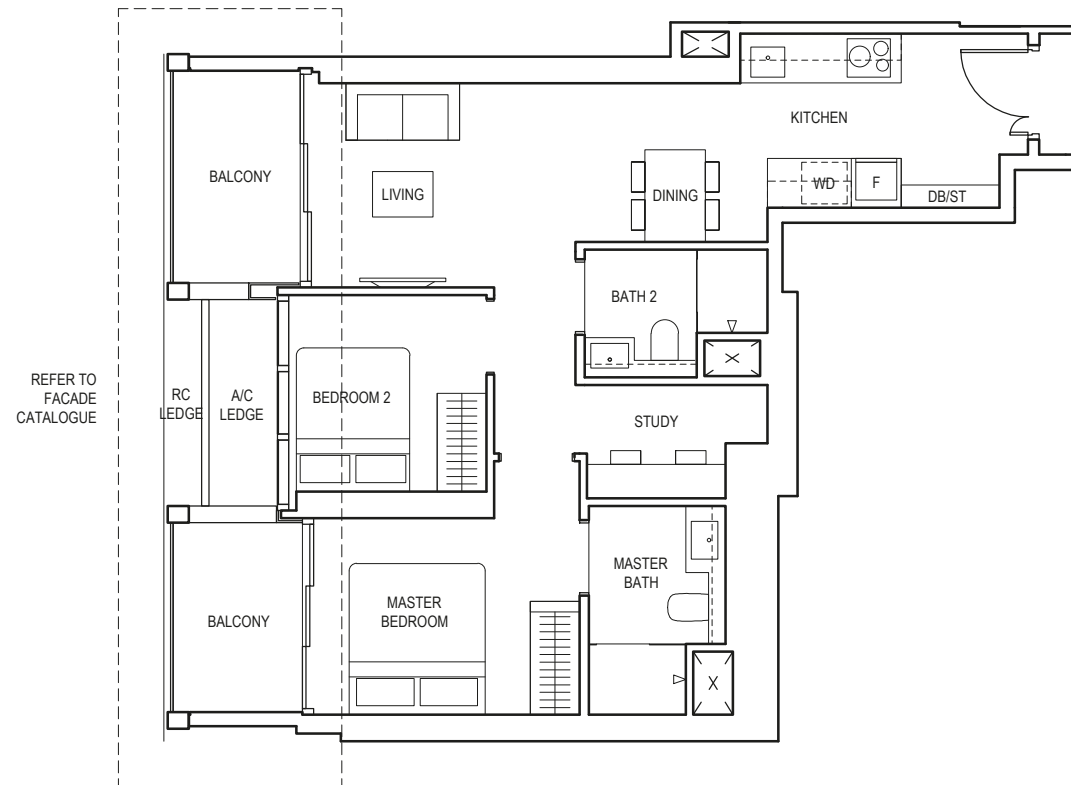
76 sq m / 818 sq ft

BLK 1  
#04-02 to #22-02  
#25-02 to #39-02

## TYPE BS1a(p)

76 sq m / 818 sq ft

BLK 1  
#23-02



**LEGEND (WHERE APPLICABLE)**  
 DB Distribution Board    WD Washer cum Dryer    W/D Washer and Dryer    F Fridge    DW Dishwasher    WIW Walk-In Wardrobe  
 WC Water Closet    ST Storage    HS Household Shelter    TB Tallboy    CH Wine Chiller

Area includes air-con (a/c) ledge, balcony and void where applicable. Please refer to the keyplan for orientation. The plans are subjected to change as may be approved by relevant authorities. All floor plans are approximate measurements only and are subjected to government re-survey. The balcony shall not be enclosed unless with the approved balcony screen. For an illustration of the approved balcony screen, please refer to the diagram annexed hereto as "Annexure A".

# 2-BEDROOM + STUDY

## TYPE BS2

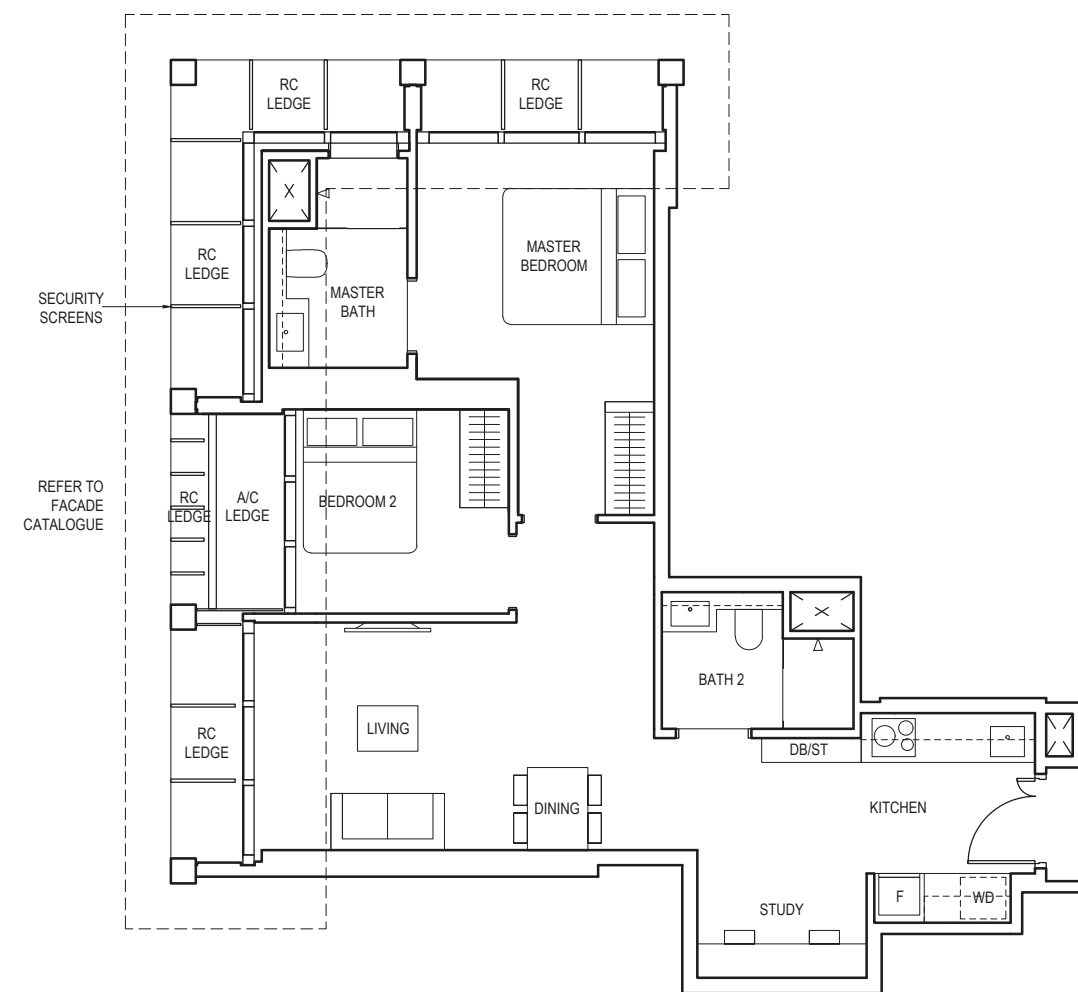
74 sq m / 797 sq ft

BLK 1  
#40-05 to #44-05  
#46-05 to #47-05

## TYPE BS2(p)

74 sq m / 797 sq ft

BLK 1  
#48-05



**LEGEND (WHERE APPLICABLE)**  
 DB Distribution Board    WD Washer cum Dryer    W/D Washer and Dryer    F Fridge    DW Dishwasher    WIW Walk-In Wardrobe  
 WC Water Closet    ST Storage    HS Household Shelter    TB Tallboy    CH Wine Chiller

Area includes air-con (a/c) ledge, balcony and void where applicable. Please refer to the keyplan for orientation. The plans are subjected to change as may be approved by relevant authorities. All floor plans are approximate measurements only and are subjected to government re-survey. The balcony shall not be enclosed unless with the approved balcony screen. For an illustration of the approved balcony screen, please refer to the diagram annexed hereto as "Annexure A".

# 2-BEDROOM + STUDY

## TYPE BS2a

77 sq m / 829 sq ft

BLK 1  
#04-05 to #22-05  
#25-05 to #39-05

## TYPE BS2a(p)

77 sq m / 829 sq ft

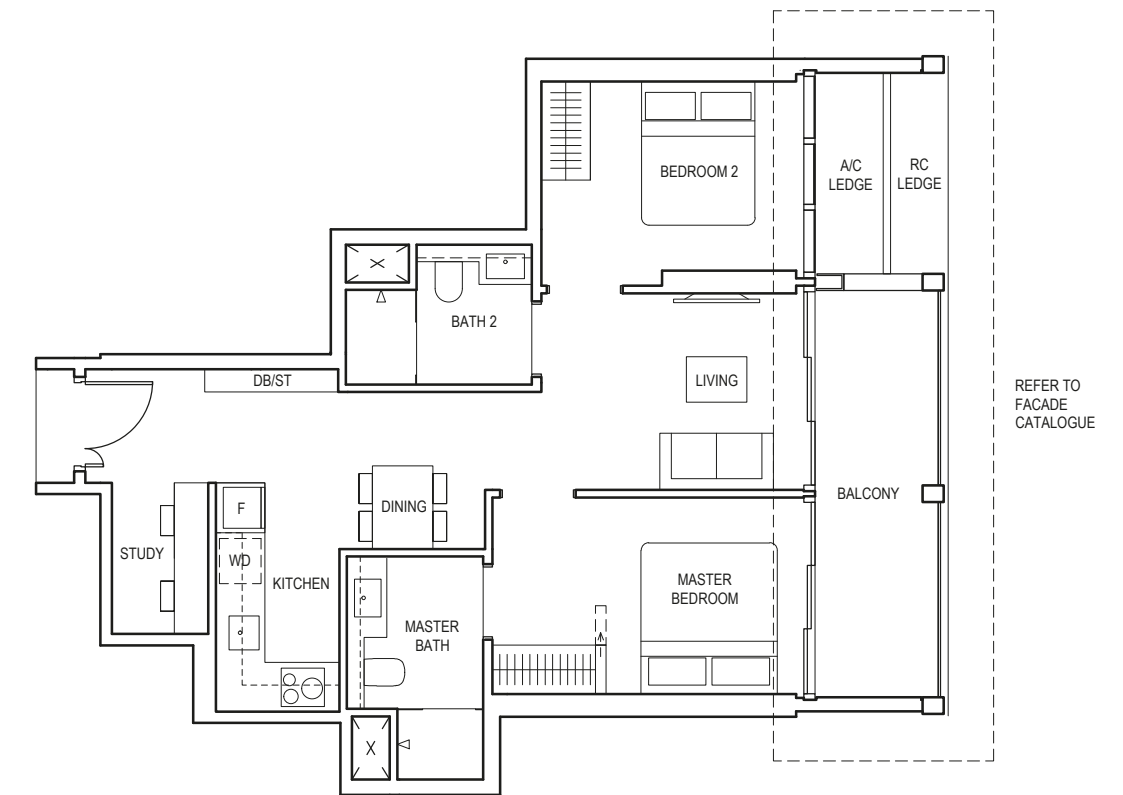
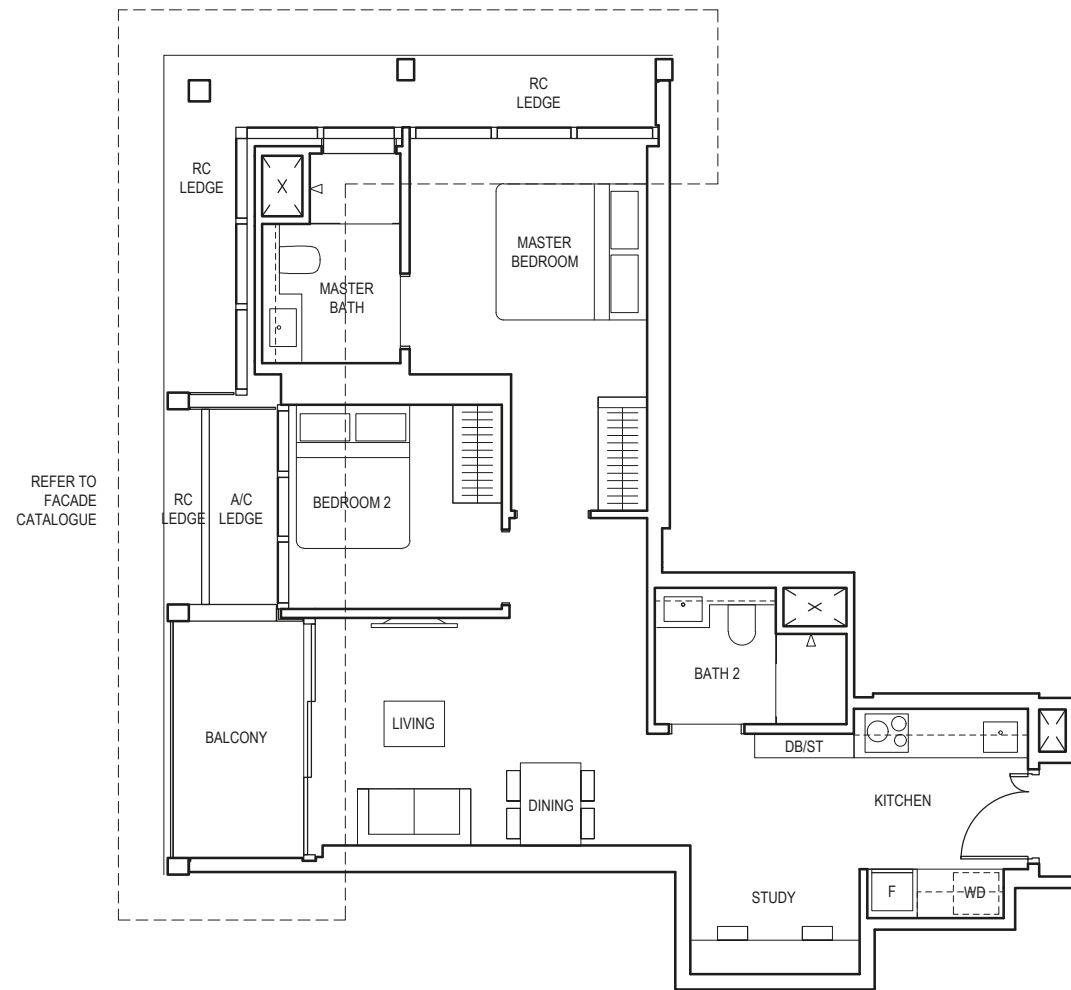
BLK 1  
#23-05

# 2-BEDROOM + STUDY

## TYPE BS3

75 sq m / 807 sq ft

BLK 5  
#04-24 to #23-24



**LEGEND (WHERE APPLICABLE)**  
**DB** Distribution Board    **WD** Washer cum Dryer    **WD** Washer and Dryer    **F** Fridge    **DW** Dishwasher    **WIW** Walk-In Wardrobe  
**WC** Water Closet    **ST** Storage    **HS** Household Shelter    **TB** Tallboy    **CH** Wine Chiller

Area includes air-con (a/c) ledge, balcony and void where applicable. Please refer to the keyplan for orientation. The plans are subjected to change as may be approved by relevant authorities. All floor plans are approximate measurements only and are subjected to government re-survey. The balcony shall not be enclosed unless with the approved balcony screen. For an illustration of the approved balcony screen, please refer to the diagram annexed hereto as "Annexure A".



**LEGEND (WHERE APPLICABLE)**  
**DB** Distribution Board    **WD** Washer cum Dryer    **WD** Washer and Dryer    **F** Fridge    **DW** Dishwasher    **WIW** Walk-In Wardrobe  
**WC** Water Closet    **ST** Storage    **HS** Household Shelter    **TB** Tallboy    **CH** Wine Chiller

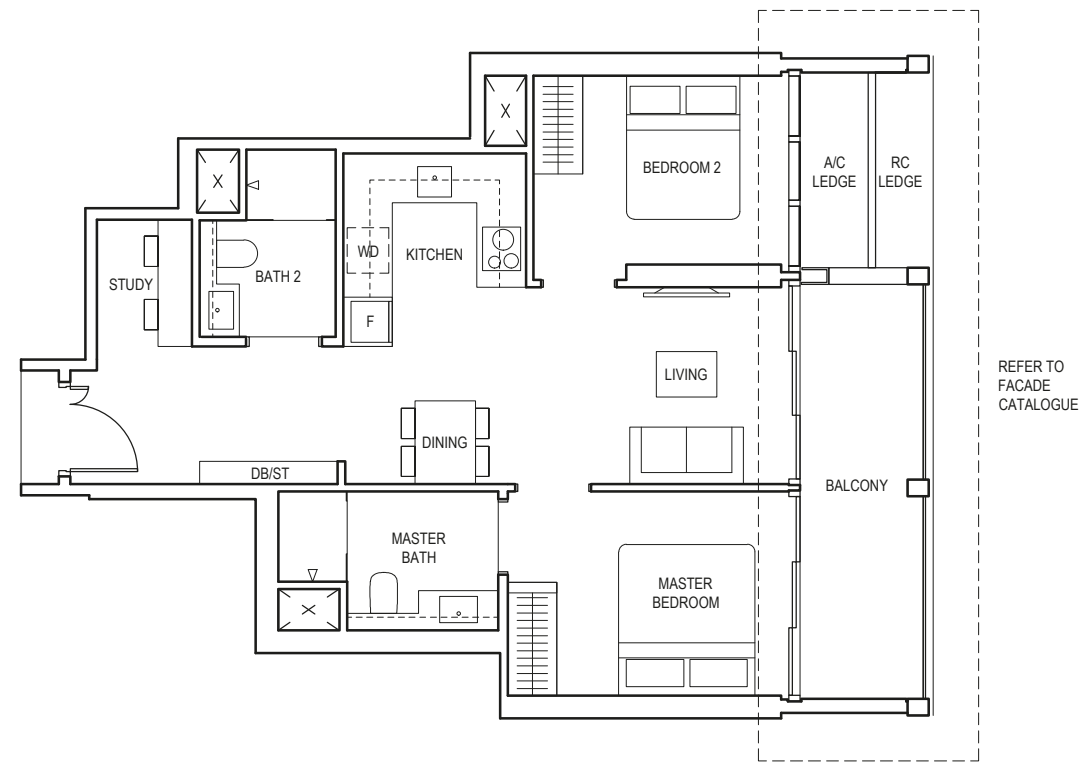
Area includes air-con (a/c) ledge, balcony and void where applicable. Please refer to the keyplan for orientation. The plans are subjected to change as may be approved by relevant authorities. All floor plans are approximate measurements only and are subjected to government re-survey. The balcony shall not be enclosed unless with the approved balcony screen. For an illustration of the approved balcony screen, please refer to the diagram annexed hereto as "Annexure A".

# 2-BEDROOM + STUDY

## TYPE BS4

75 sq m / 807 sq ft

BLK 5  
#04-25 to #23-25



**LEGEND (WHERE APPLICABLE)**  
 DB Distribution Board    WD Washer cum Dryer    W/D Washer and Dryer    F Fridge    DW Dishwasher    WIW Walk-In Wardrobe  
 WC Water Closet    ST Storage    HS Household Shelter    TB Tallboy    CH Wine Chiller

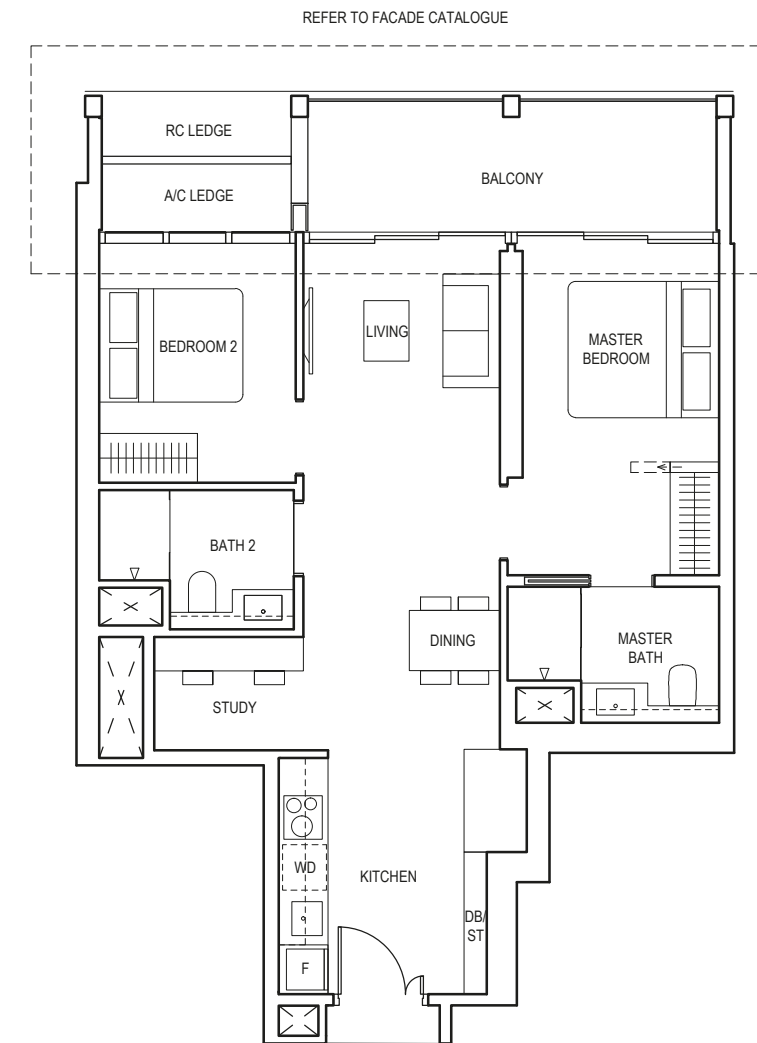
Area includes air-con (a/c) ledge, balcony and void where applicable. Please refer to the keyplan for orientation. The plans are subjected to change as may be approved by relevant authorities. All floor plans are approximate measurements only and are subjected to government re-survey. The balcony shall not be enclosed unless with the approved balcony screen. For an illustration of the approved balcony screen, please refer to the diagram annexed hereto as "Annexure A".

# 2-BEDROOM + STUDY

## TYPE BS5

80 sq m / 861 sq ft

BLK 5  
#04-21 to #23-21



**LEGEND (WHERE APPLICABLE)**  
 DB Distribution Board    WD Washer cum Dryer    W/D Washer and Dryer    F Fridge    DW Dishwasher    WIW Walk-In Wardrobe  
 WC Water Closet    ST Storage    HS Household Shelter    TB Tallboy    CH Wine Chiller

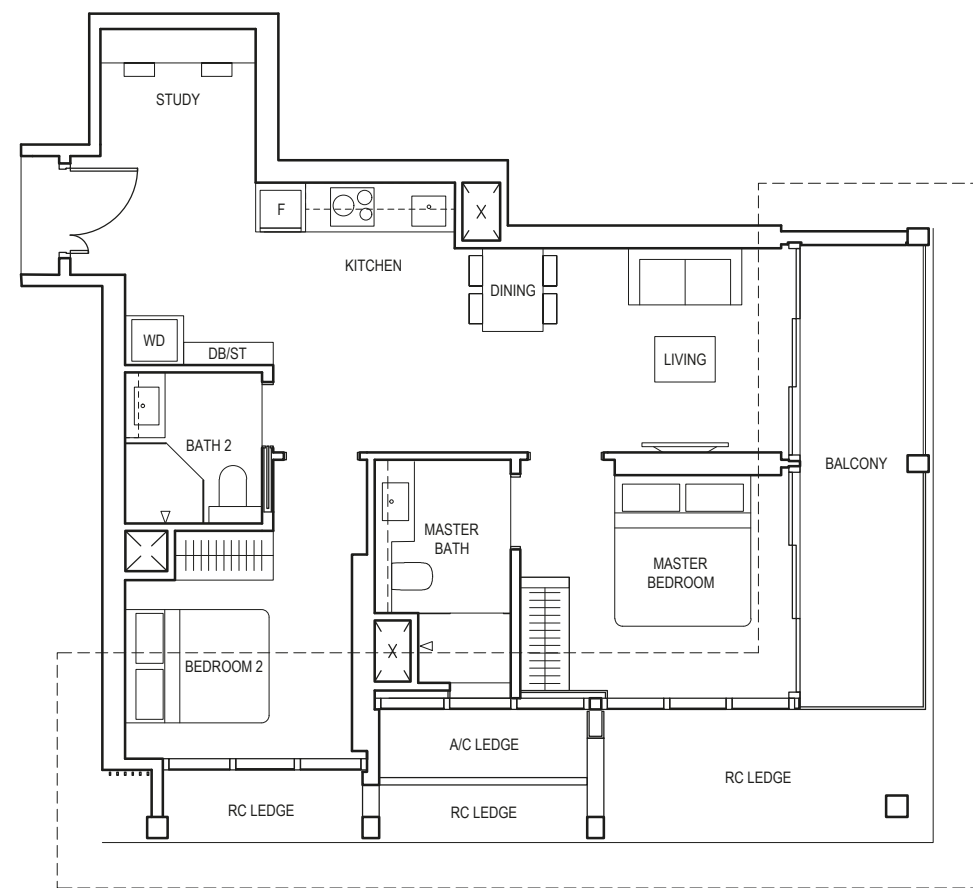
Area includes air-con (a/c) ledge, balcony and void where applicable. Please refer to the keyplan for orientation. The plans are subjected to change as may be approved by relevant authorities. All floor plans are approximate measurements only and are subjected to government re-survey. The balcony shall not be enclosed unless with the approved balcony screen. For an illustration of the approved balcony screen, please refer to the diagram annexed hereto as "Annexure A".

# 2-BEDROOM + STUDY

## TYPE BS6

82 sq m / 883 sq ft

BLK 5  
#04-26 to #23-26



REFER TO FACADE CATALOGUE



**LEGEND (WHERE APPLICABLE)**  
 DB Distribution Board    WD Washer cum Dryer    W/D Washer and Dryer    F Fridge    DW Dishwasher    WIW Walk-In Wardrobe  
 WC Water Closet    ST Storage    HS Household Shelter    TB Tallboy    CH Wine Chiller

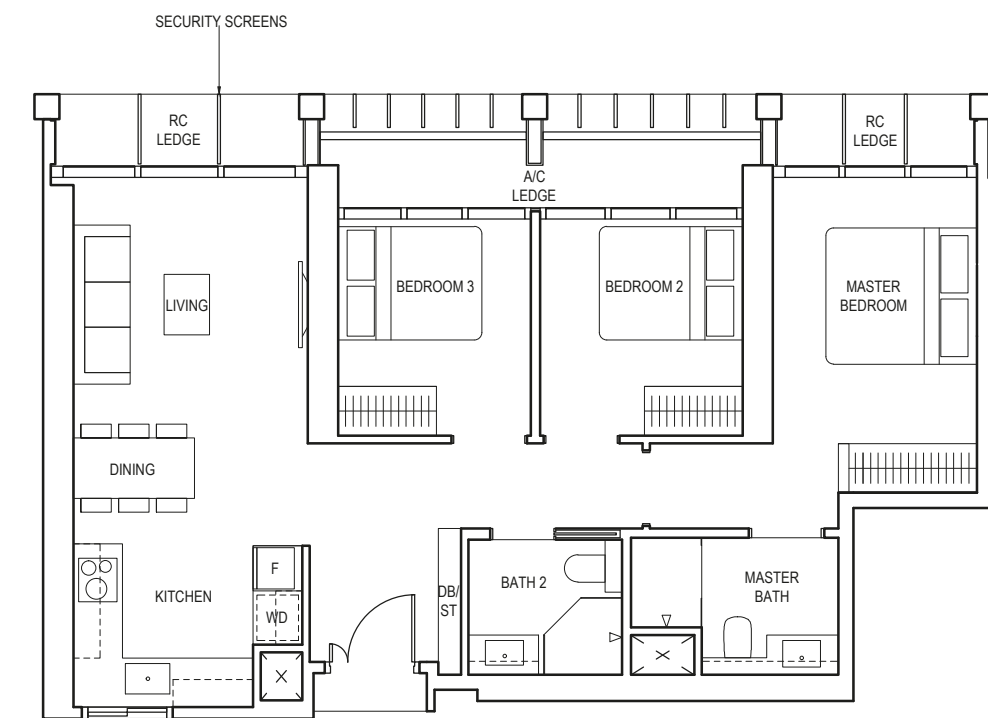
Area includes air-con (a/c) ledge, balcony and void where applicable. Please refer to the keyplan for orientation. The plans are subjected to change as may be approved by relevant authorities. All floor plans are approximate measurements only and are subjected to government re-survey. The balcony shall not be enclosed unless with the approved balcony screen. For an illustration of the approved balcony screen, please refer to the diagram annexed hereto as "Annexure A".

# 3-BEDROOM

## TYPE C1

83 sq m / 893 sq ft

BLK 1  
#40-07 to #44-07



**LEGEND (WHERE APPLICABLE)**  
 DB Distribution Board    WD Washer cum Dryer    W/D Washer and Dryer    F Fridge    DW Dishwasher    WIW Walk-In Wardrobe  
 WC Water Closet    ST Storage    HS Household Shelter    TB Tallboy    CH Wine Chiller

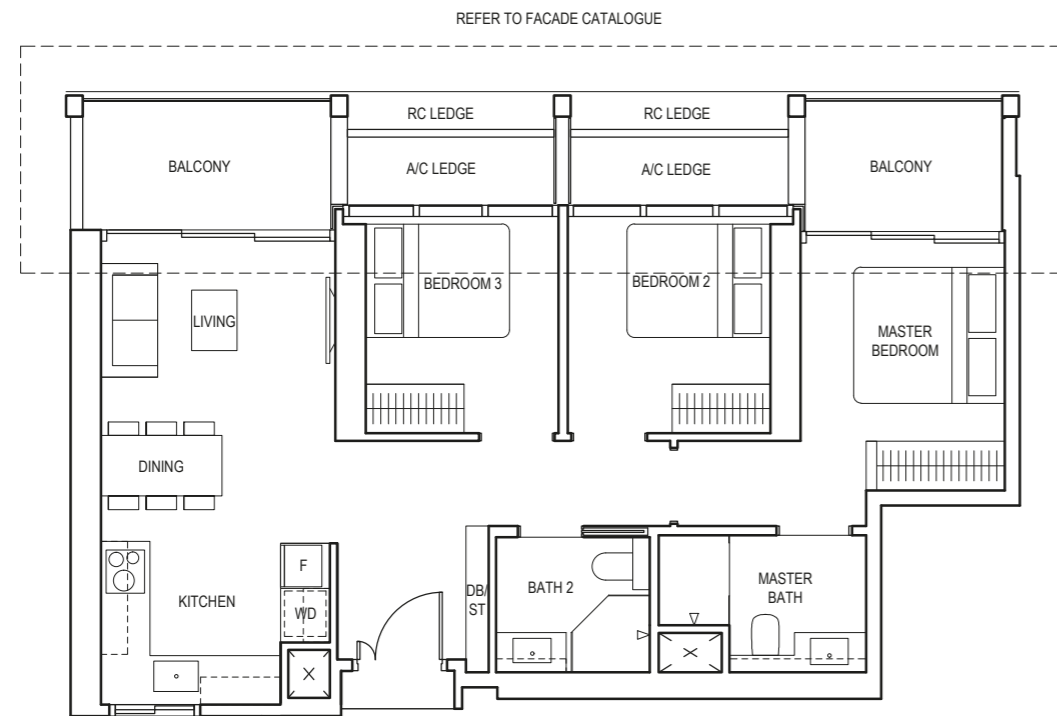
Area includes air-con (a/c) ledge, balcony and void where applicable. Please refer to the keyplan for orientation. The plans are subjected to change as may be approved by relevant authorities. All floor plans are approximate measurements only and are subjected to government re-survey. The balcony shall not be enclosed unless with the approved balcony screen. For an illustration of the approved balcony screen, please refer to the diagram annexed hereto as "Annexure A".

# 3-BEDROOM

## TYPE C1a

88 sq m / 947 sq ft

BLK 1  
#25-07 to #39-07



**LEGEND (WHERE APPLICABLE)**  
 DB Distribution Board    WD Washer cum Dryer    W/D Washer and Dryer    F Fridge    DW Dishwasher    WIW Walk-In Wardrobe  
 WC Water Closet    ST Storage    HS Household Shelter    TB Tallboy    CH Wine Chiller

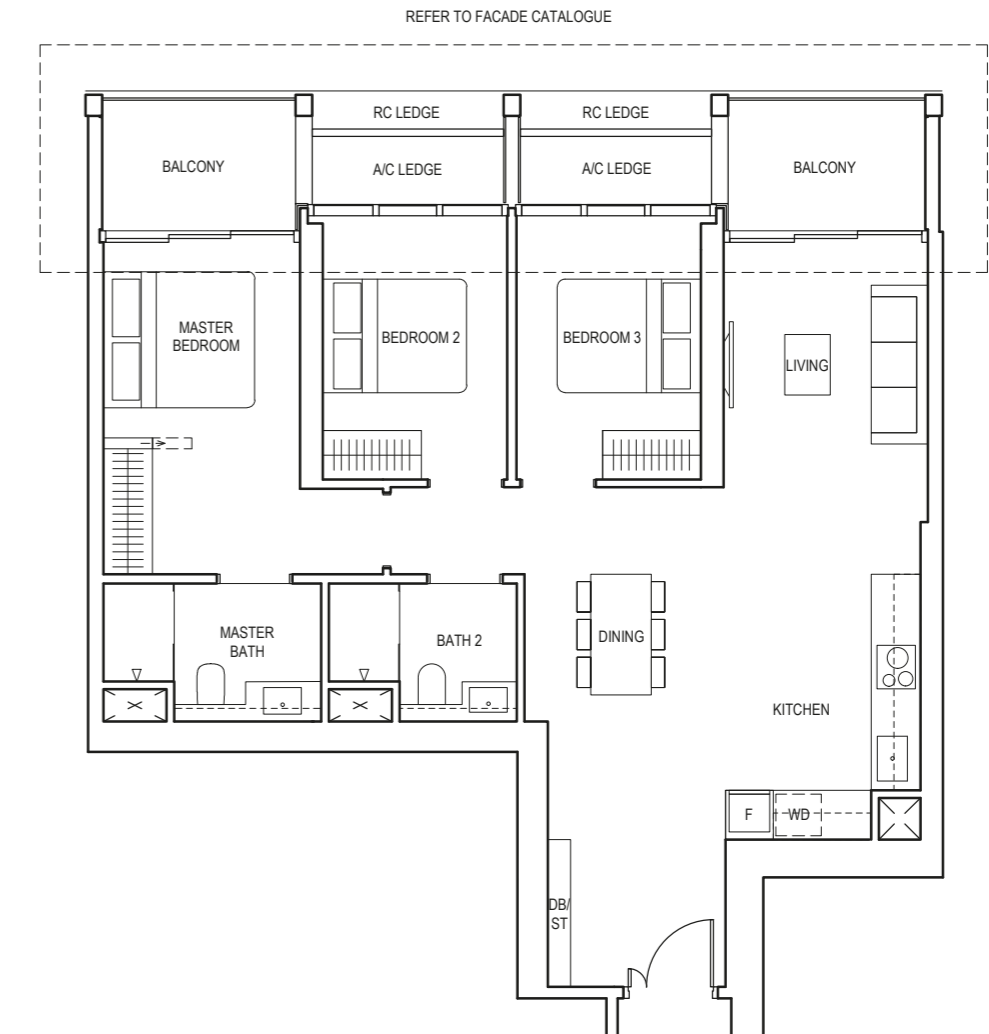
Area includes air-con (a/c) ledge, balcony and void where applicable. Please refer to the keyplan for orientation. The plans are subjected to change as may be approved by relevant authorities. All floor plans are approximate measurements only and are subjected to government re-survey. The balcony shall not be enclosed unless with the approved balcony screen. For an illustration of the approved balcony screen, please refer to the diagram annexed hereto as "Annexure A".

# 3-BEDROOM

## TYPE C2

105 sq m / 1130 sq ft

BLK 5  
#04-22 to #23-22



**LEGEND (WHERE APPLICABLE)**  
 DB Distribution Board    WD Washer cum Dryer    W/D Washer and Dryer    F Fridge    DW Dishwasher    WIW Walk-In Wardrobe  
 WC Water Closet    ST Storage    HS Household Shelter    TB Tallboy    CH Wine Chiller

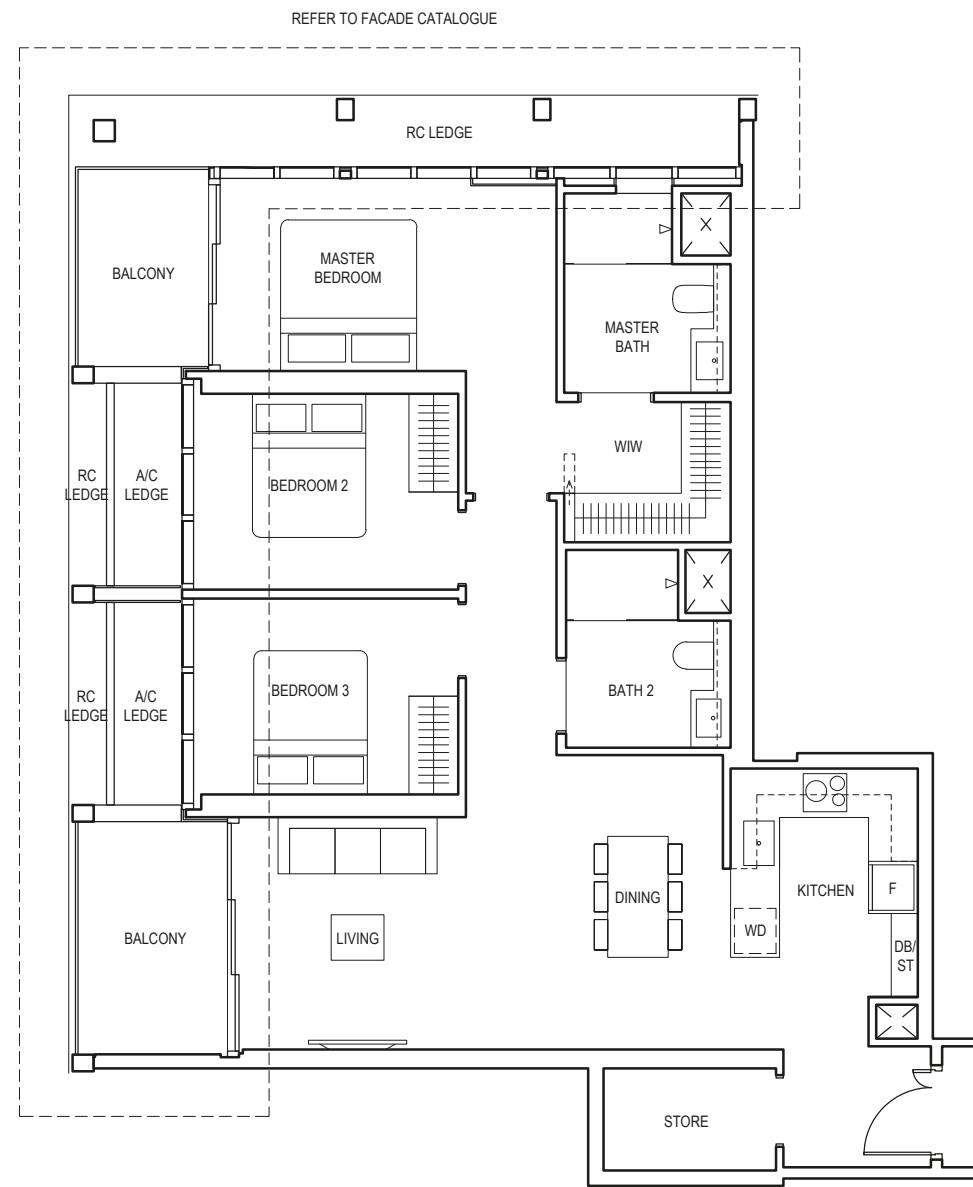
Area includes air-con (a/c) ledge, balcony and void where applicable. Please refer to the keyplan for orientation. The plans are subjected to change as may be approved by relevant authorities. All floor plans are approximate measurements only and are subjected to government re-survey. The balcony shall not be enclosed unless with the approved balcony screen. For an illustration of the approved balcony screen, please refer to the diagram annexed hereto as "Annexure A".

# 3-BEDROOM

## TYPE C3

117 sq m / 1259 sq ft

BLK 5  
#04-20 to #23-20



**LEGEND (WHERE APPLICABLE)**  
 DB Distribution Board    WD Washer cum Dryer    W/D Washer and Dryer    F Fridge    DW Dishwasher    WIW Walk-In Wardrobe  
 WC Water Closet    ST Storage    HS Household Shelter    TB Tallboy    CH Wine Chiller

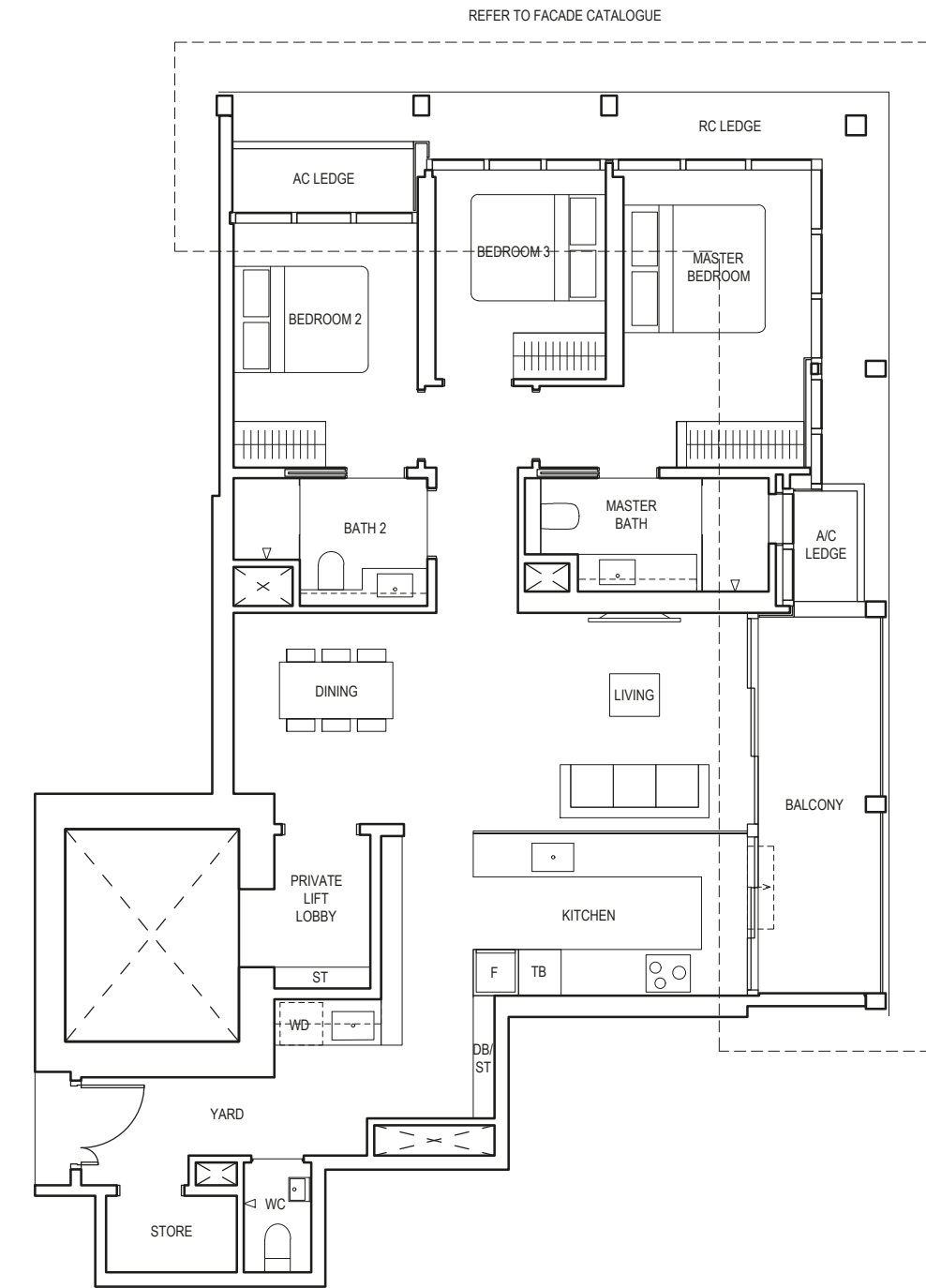
Area includes air-con (a/c) ledge, balcony and void where applicable. Please refer to the keyplan for orientation. The plans are subjected to change as may be approved by relevant authorities. All floor plans are approximate measurements only and are subjected to government re-survey. The balcony shall not be enclosed unless with the approved balcony screen. For an illustration of the approved balcony screen, please refer to the diagram annexed hereto as "Annexure A".

# 3-BEDROOM PREMIUM

## TYPE CP1

122 sq m / 1313 sq ft

BLK 5  
#04-23 to #23-23



**LEGEND (WHERE APPLICABLE)**  
 DB Distribution Board    WD Washer cum Dryer    W/D Washer and Dryer    F Fridge    DW Dishwasher    WIW Walk-In Wardrobe  
 WC Water Closet    ST Storage    HS Household Shelter    TB Tallboy    CH Wine Chiller

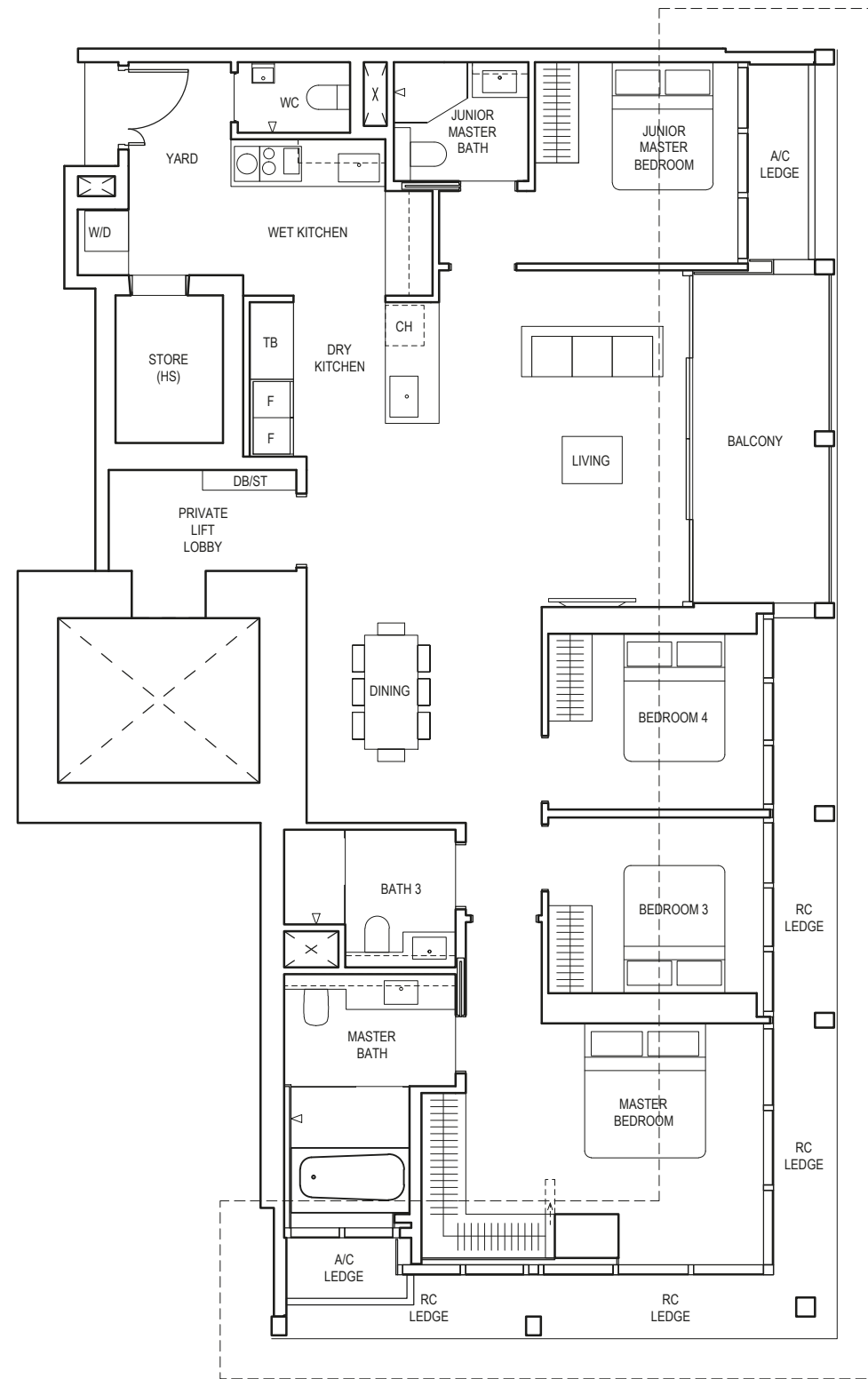
Area includes air-con (a/c) ledge, balcony and void where applicable. Please refer to the keyplan for orientation. The plans are subjected to change as may be approved by relevant authorities. All floor plans are approximate measurements only and are subjected to government re-survey. The balcony shall not be enclosed unless with the approved balcony screen. For an illustration of the approved balcony screen, please refer to the diagram annexed hereto as "Annexure A".

# 4-BEDROOM PREMIUM

## TYPE DP1

163 sq m / 1755 sq ft

BLK 1  
#25-10 to #44-10



REFER TO FACADE CATALOGUE



**LEGEND (WHERE APPLICABLE)**  
 DB Distribution Board    WD Washer cum Dryer    W/D Washer and Dryer    F Fridge    DW Dishwasher    WIW Walk-In Wardrobe  
 WC Water Closet    ST Storage    HS Household Shelter    TB Tallboy    CH Wine Chiller

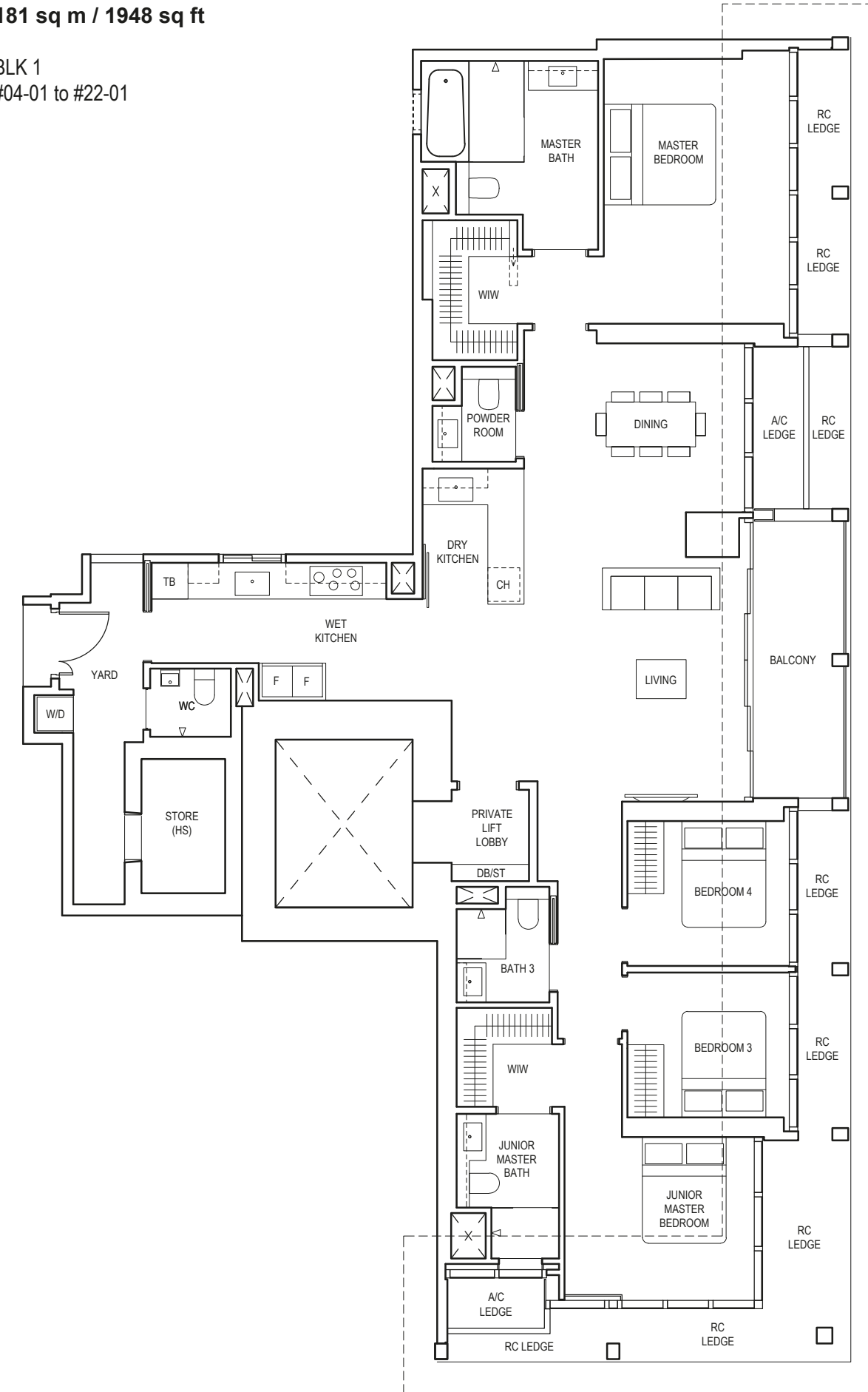
Area includes air-con (a/c) ledge, balcony and void where applicable. Please refer to the keyplan for orientation. The plans are subjected to change as may be approved by relevant authorities. All floor plans are approximate measurements only and are subjected to government re-survey. The balcony shall not be enclosed unless with the approved balcony screen. For an illustration of the approved balcony screen, please refer to the diagram annexed hereto as "Annexure A".

# 4-BEDROOM PREMIUM

## TYPE DP2

181 sq m / 1948 sq ft

BLK 1  
#04-01 to #22-01



REFER TO FACADE CATALOGUE



**LEGEND (WHERE APPLICABLE)**  
 DB Distribution Board    WD Washer cum Dryer    W/D Washer and Dryer    F Fridge    DW Dishwasher    WIW Walk-In Wardrobe  
 WC Water Closet    ST Storage    HS Household Shelter    TB Tallboy    CH Wine Chiller

Area includes air-con (a/c) ledge, balcony and void where applicable. Please refer to the keyplan for orientation. The plans are subjected to change as may be approved by relevant authorities. All floor plans are approximate measurements only and are subjected to government re-survey. The balcony shall not be enclosed unless with the approved balcony screen. For an illustration of the approved balcony screen, please refer to the diagram annexed hereto as "Annexure A".

## TYPE DP2(p)

181 sq m / 1948 sq ft

BLK 1  
#23-01

# 4-BEDROOM PREMIUM

## TYPE DP3

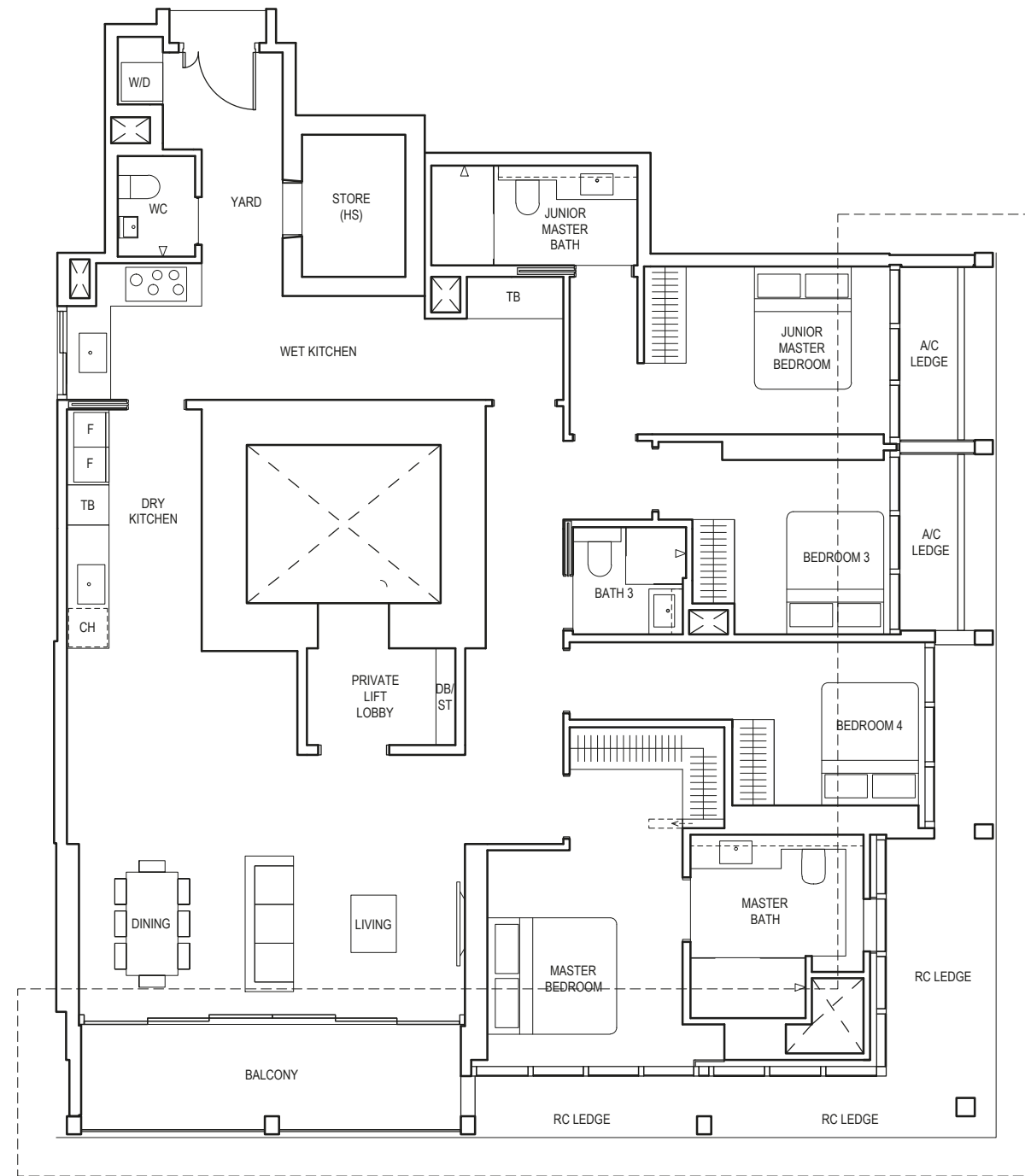
182 sq m / 1959 sq ft

BLK 1  
#04-11 to #22-11

## TYPE DP3(p)

182 sq m / 1959 sq ft

BLK 1  
#23-11



REFER TO FACADE CATALOGUE

BASK IN THE  
SPACIOUSNESS  
OF A RARE CITY  
HOME



**LEGEND (WHERE APPLICABLE)**  
 DB Distribution Board    WD Washer cum Dryer    W/D Washer and Dryer    F Fridge    DW Dishwasher    WIW Walk-In Wardrobe  
 WC Water Closet    ST Storage    HS Household Shelter    TB Tallboy    CH Wine Chiller

Area includes air-con (a/c) ledge, balcony and void where applicable. Please refer to the keyplan for orientation. The plans are subjected to change as may be approved by relevant authorities. All floor plans are approximate measurements only and are subjected to government re-survey. The balcony shall not be enclosed unless with the approved balcony screen. For an illustration of the approved balcony screen, please refer to the diagram annexed hereto as "Annexure A".

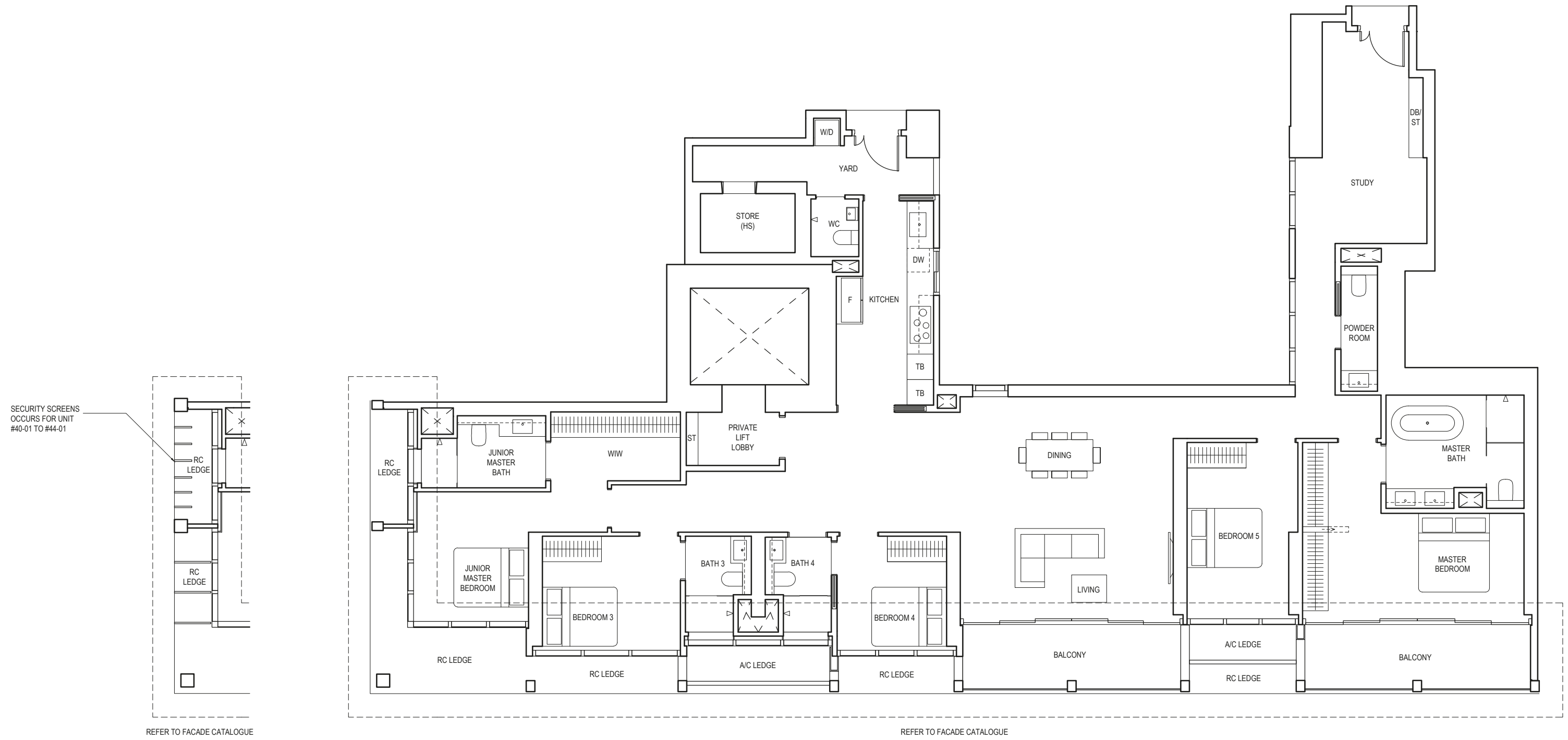
# 5-BEDROOM PREMIUM

## TYPE EP1

259 sq m / 2788 sq ft

BLK 1

#25-01 to #44-01



SECURITY SCREENS OCCURS FOR UNIT #40-01 TO #44-01

REFER TO FACADE CATALOGUE

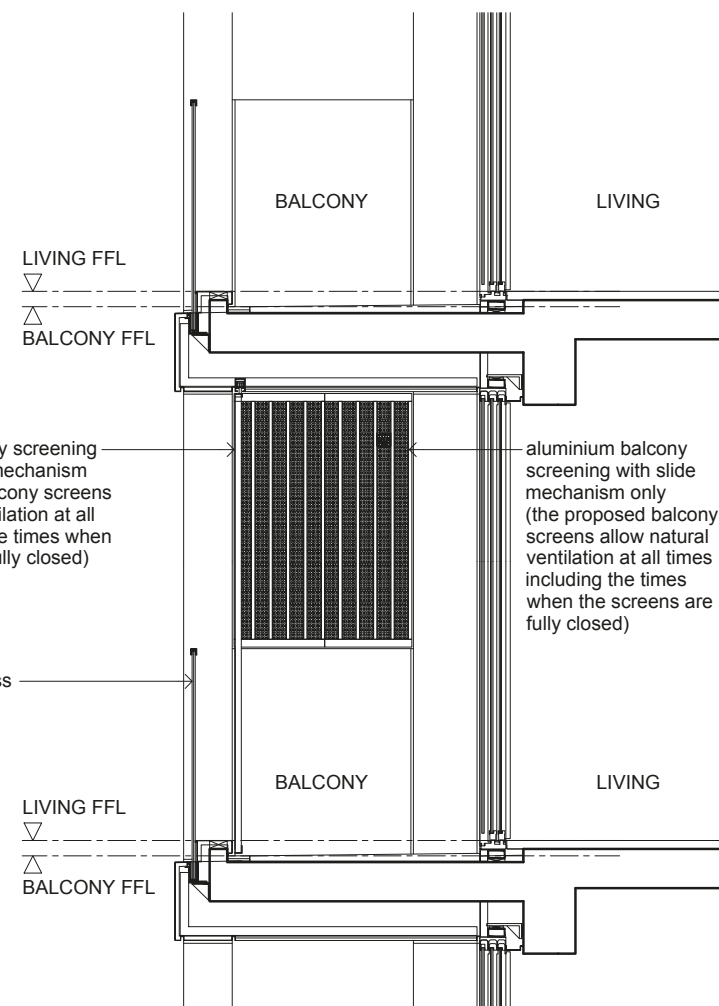
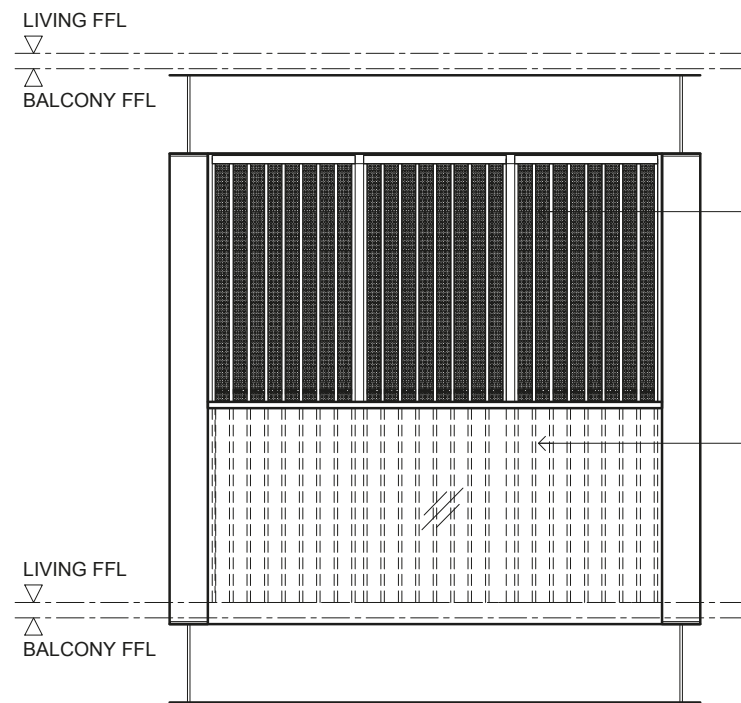
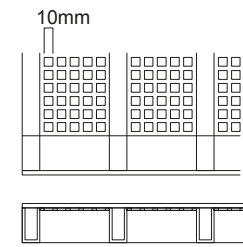
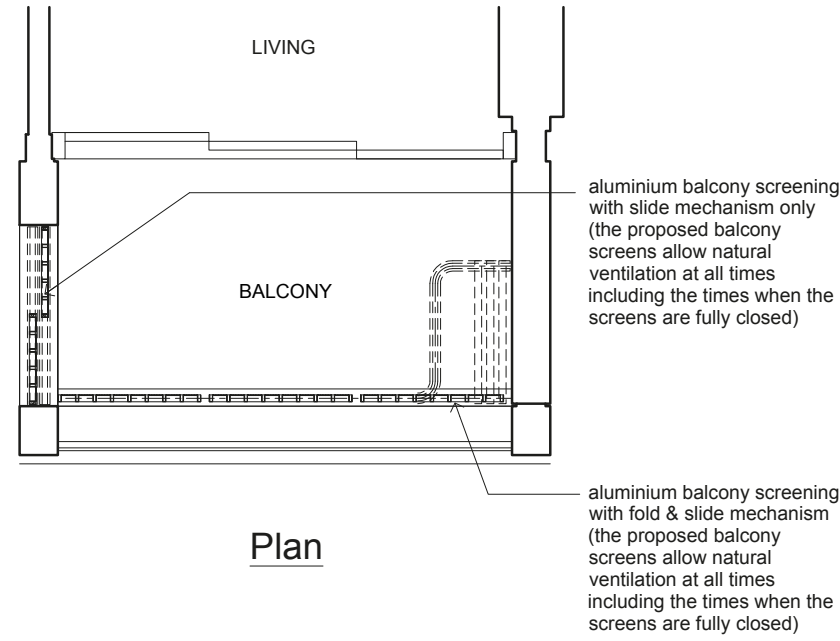
REFER TO FACADE CATALOGUE



**LEGEND (WHERE APPLICABLE)**  
 DB Distribution Board    WD Washer cum Dryer    W/D Washer and Dryer    F Fridge    DW Dishwasher    WIW Walk-In Wardrobe  
 WC Water Closet    ST Storage    HS Household Shelter    TB Tallboy    CH Wine Chiller

Area includes air-con (a/c) ledge, balcony and void where applicable. Please refer to the keyplan for orientation. The plans are subjected to change as may be approved by relevant authorities. All floor plans are approximate measurements only and are subjected to government re-survey. The balcony shall not be enclosed unless with the approved balcony screen. For an illustration of the approved balcony screen, please refer to the diagram annexed hereto as "Annexure A".

# ANNEXURE A: APPROVED TYPICAL BALCONY SCREEN DESIGN



Note:  
The balcony shall not be enclosed unless with the approved balcony screen as shown above.  
The cost of the screen and installation shall be borne by the Purchaser.  
Where required to facilitate installation, the Architect reserves the right to determine appropriate details not limited to fixing details and colour tones.

JOINTLY DEVELOPED BY:

CapitaLand

CITY DEVELOPMENTS LIMITED

Developer: Legend Quay Pte. Ltd. (Registration No. 201914652M), Legend Commercial Trustee Pte. Ltd. (Registration No. 201914656R) (in its capacity as trustee-manager of Legend Commercial Trust), DBS Trustee Limited (Registration No. 197502043G) (in its capacity as trustee of Gemini One Trust) and DBS Trustee Limited (Registration No. 197502043G) (in its capacity as trustee of Ascott Real Estate Investment Trust) • Housing Developer's Licence No.: C1407 • Vendor: Legend Quay Pte. Ltd. • Tenure of Land: Leasehold tenure of 99 years commencing from 17 September 2021 • Lot No.: Lots 146W-PT (now known as Lot 80001T) and 147V both of TS 9 at River Valley Road • Expected Date of Vacant Possession: 30 June 2027 • Expected Date of Legal Completion: 30 June 2030

While reasonable care has been taken in the preparation of this brochure, neither the developer nor its agents will be held responsible for any inaccuracies or omissions. To the extent permissible by law, the statements, information and depictions in this brochure may not be relied upon as statements or representations of fact, and they are not intended to form any part of the contract for the sale of the housing units. In particular, visual representations such as renderings, illustrations, pictures and drawings are artists' impressions only and photographs are only decor suggestions and cannot be regarded as representations of fact. The brand, colour and model of all materials, fittings, equipment, finishes, installations and appliances supplied shall be provided subject to the developer's architect's selection, market availability and at the sole discretion of the developer. All information and specifications contained in this brochure are current at the time of going to press and are subject to such changes as are required by the relevant authorities or the developer. All plans and models are not to scale unless expressly stated and are subject to any amendments which are required or approved by the relevant authorities. All areas and measurements stated in the brochure are approximate only and subject to final survey. The Sale and Purchase Agreement embodies all the terms and conditions between the developer and the purchaser and supersedes and cancels in all respects all previous representations, warranties, promises, inducements or statements of intention, whether written or oral made by the developer and/or the developer's agent which are not embodied in the Sale and Purchase Agreement.

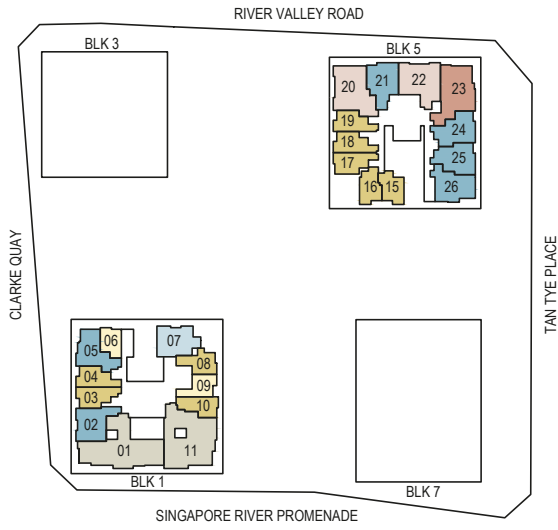
Premier Residential Services: Please note that the use of these services and facilities are chargeable as they are provided by third-party service providers ("Service Providers"). While our Residential Host will assist in making arrangements, all costs incurred for use of these services and facilities are to be borne by residents. Provision of these services and facilities may be modified according to availability and at the discretion of the Service Providers. The Service Providers also reserve the right to terminate the services and facilities without prior notice. Other terms and conditions apply. Visual representations are not representations of the actual provision.

Smart Home: The unit will be supplied and installed with the following items ("SMART Home System"): a) Smart Home Gateway, b) Smart Speaker and Voice Control Assistant, c) IP Camera (only applicable for units with private lift), d) Tablet Central Console, e) Motion Sensor, f) Digital Lockset, g) Doorbell with Camera, h) Lighting Control, i) Energy Monitoring, j) Homehub Siren Alarm, k) Air-Conditioning Control System, l) Home Fire Alarm Device (HFAD). The make, model, brand, design and technology of the SMART Home System to be supplied and installed in the actual unit may differ from the above illustration and are subject to change. Terms and conditions apply. Buyers shall be required to liaise with the smart home vendor instead of the developer to make all arrangements for the set up and configuration of, and for any queries, defects, maintenance and/or upgrade issues with the SMART Home System at buyers' own costs. Items/devices which are not listed above are not included in the SMART Home System and may be purchased from the smart home vendor directly and installed at buyers' own costs after the handover of the unit.

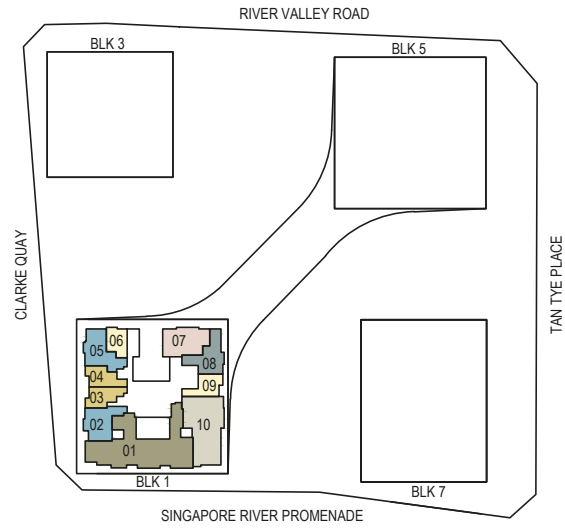
This brochure is printed on eco-friendly paper, October 2021.

# RESIDENTIAL STOREY KEY PLANS

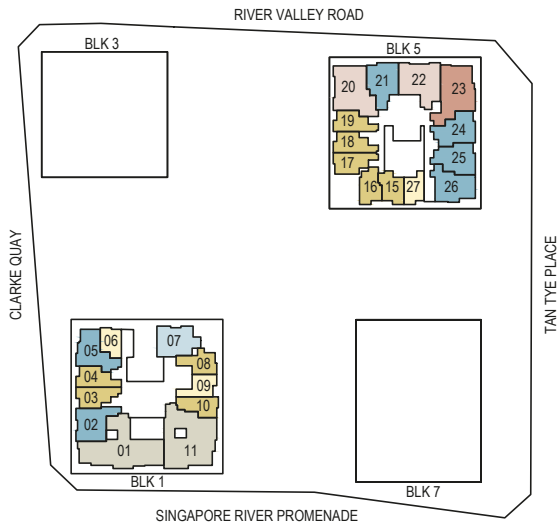
## 4TH - 7TH STOREY



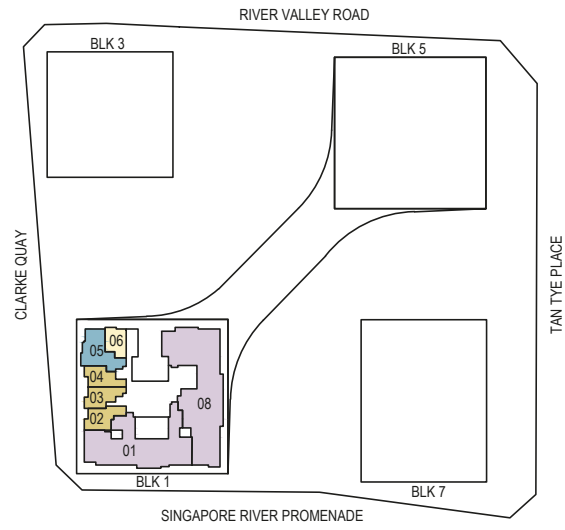
## 40TH - 44TH STOREY



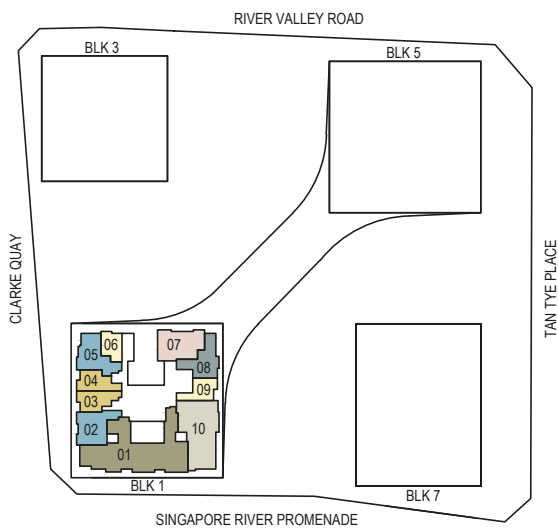
## 8TH - 23RD STOREY



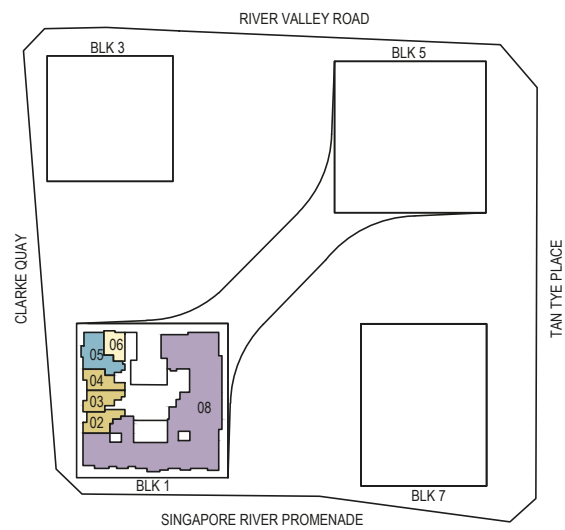
## 46TH - 47TH STOREY



## 25TH - 39TH STOREY



## 48TH STOREY



- |                   |                           |                   |                   |
|-------------------|---------------------------|-------------------|-------------------|
| 1-BEDROOM         | 2-BEDROOM                 | 3-BEDROOM         | 5-BEDROOM PREMIUM |
| 1-BEDROOM + STUDY | 2-BEDROOM + ENSUITE STUDY | 3-BEDROOM PREMIUM | SKY SUITE         |
|                   | 2-BEDROOM + STUDY         | 4-BEDROOM PREMIUM | SUPER PENTHOUSE   |

Key plans are not drawn to scale. The shading and outline of the key plans are for illustrative purposes only. The boundary lines of the units set out here are not to be taken as a factual representation of the actual units. Kindly refer to the approved building plans for the actual unit outline/boundary lines.